

# New Zealand Portrait Gallery Te Pūkenga Whakaata

## Annual Report 2018



# Chairman's Introduction

On behalf of the Trustees and Management Board of the New Zealand Portrait Gallery - Te Pūkenga Whakaata, it is once again my pleasure to present our Annual Report.



The Chairman Dr Keith Ovenden (far right) and Director Jaenine Parkinson (second from right) welcome the Governor-General, The Rt Hon Dame Patsy Reddy, and Sir David Gascoigne to the Gallery on 25 January 2018

Our focus this past year has been on strategic development: how, how fast, and where to develop our activities further. The background to the discussion has been two-fold: on one side the relentless need to raise the money to maintain the high quality of exhibitions, staff professionalism, and all-round Gallery performance for which we have become recognised. On the other the need - against the restrictions which limited fundraising opportunities impose - to expand our premises, staff, and activities, and improve our performance. The quest for solutions continues.

Meanwhile, another successful year of exhibitions began with the ever popular Adam Portraiture Award, to which we were delighted to welcome Angus Trumble, Director of the Australian National Portrait Gallery. In addition to his duties as competition judge, he also enabled members of the Board to get a better appreciation of the funding and structural imperatives for a truly national portrait gallery. The winter show of portrait works of and about Katherine Mansfield, was our contribution to the Suffrage 125 celebrations and the 130th anniversary of Mansfield's

birth. The spring/summer exhibition of John Walsh's *Portrait of Ūawa Tolaga Bay* was perhaps the most popular, and probably the most innovative exhibition that we have mounted, and brought extraordinary publicity to the Gallery. We are immensely grateful to John, to the people of Tolaga Bay, and to the work behind the scenes of our Trustee, Helen Kedgley, for bringing this remarkable exhibition to the Gallery. All the exhibitions, along with the small exhibitions in the Deane Gallery, which are such a vital as well as integral part of our work, are referred to in greater detail in this report.

Some changes in personnel are inevitable as institutions mature.

Fundraising remained a major focus, while never losing sight of our objective: to bring to the New Zealand public the benefit of a portrait gallery that is a true museum of biography, committed to the portrayal of our people and our stories, our history and our portrait art in a way that is accessible, stimulating and entertaining.

This will be my last report to you as Chairman. The job has brought me immense satisfaction and pleasure over the past six years, as did the Trusteeship that I was privileged to hold for the six years before that. I have benefited enormously from the help of all my colleagues on the Board, from the guidance that

## **“committed to the portrayal of our people and our stories, our history and our portrait art”**

In June we were very sorry to lose Liz Stringer from our Board of Trustees. Liz had been with us for ten years and had made a significant contribution to our affairs as an active member of the Administration Committee, an ever ready contributor to a multiplicity of our activities, and an immensely generous host of Gallery functions, small and large, at her home. I know that I speak for the whole Gallery community in thanking Liz for the great contribution that she made. We are all delighted that she has accepted the role of Trustee Emerita and will be maintaining a close connection with us while also continuing to support the Liz Stringer Internship for a young curator at the start of a career.

I received from my predecessors, from professional collaboration with the three Directors with whom it has been a privilege to work, and from the friendship and trust of everyone in the wider Gallery community, as well as the developing confidence shown by significant figures in local and central government. Together, you have all been instrumental in laying the foundations for a national portrait gallery. The Trustees were unanimous in their pleasure that Dr Alan Bollard accepted their invitation to take up the Chairmanship from 1 January 2019.

**Keith Ovenden**  
Chairman

# Exhibitions

The Gallery's exhibitions programme continued to grow in quality and importance and attracted 36,819 visitors in 2018. As the Gallery's reputation grows, our exhibition curators are increasingly able to draw on important artworks held in public and private collections throughout the country.

**11** **36,819** **VISITORS** **31**  
**PUBLIC PROGRAMMES**  
**EXHIBITIONS**

## Frances Hodgkins People

16 November - 14 February 2018



Frances Hodgkins *Mrs Lovell Reddie* c. 1916.  
Watercolour. Private collection, Wellington.

With the generous support of the Stout Trust and Lion Foundation, art historian and 19th century specialist in women artists, Dr Pamela Gerrish Nunn, curated this exhibition covering 50 years of Frances Hodgkins' life (1869-1947). With figurative works from private and public collections, some rarely seen, this show illustrated the significance of the human figure and face in Hodgkins' work. This was one of the Gallery's most ambitious exhibitions to date and the biggest collection of Frances Hodgkins' paintings seen in Wellington for many years.



Images from left to right: Arlen James *Man in the Red Hat* 2017; Colin Hoare *Ross Mitchell-Anyon* 2017; Duncan Pepe Long *RACHEL* 2017; Raewyn Smith *Portrait of Sophy* 2017; Nancy Honore *Assessment* 2017.

## 2018 Adam Portraiture Award

1 March - 27 May 2018

This biennial exhibition sponsored by the Adam Foundation, presented the works of the 50 finalists in the 2018 Adam Portraiture Award. The competition attracted a field of 278 digital entries and was judged by Angus Trumble, Director of the National Portrait Gallery of Australia. The first prize of \$20,000 was awarded to Logan Moffat for *Elam 2017*, a portrait of fellow students Jayden Plank and Harry Telfer. Though Logan is the youngest winner in the 20-year history of the Award, this was the third time he had been selected as a finalist. Second prize went to Martha Mitchell, also a third time finalist for her portrait of Oliver Mitchell and dog Maddie (*Things to Do, Places to Be*) 2017.

## Julia Holden: Performance painting

5-22 July 2018

This exhibition of over 200 works produced over the past seven years by the innovative Christchurch based artist, Julia Holden, illustrated the various ways Holden has pushed the boundaries of portraiture - combining painting with performance, photography and animated film.



Artist Julia Holden, Christchurch Major Lianne Dalziel, Hon. Ruth Dyson MP and Chris Carter in front of Julia's portrait of the Mayor at the opening on 4 July.





Anne Estelle Rice, *Portrait of Katherine Mansfield* (1918-1933). Oil on canvas. Collection Museum of New Zealand, Te Papa Tongarewa.

## Katherine Mansfield - A Portrait

**2 August - 22 October 2018**

Beginning with Anne Estelle Rice's iconic 1918 portrait, curator Penelope Jackson assembled a range of portraits done over the past 100 years of New Zealand's most internationally acclaimed writer. Expressed in different media from the representational to abstract, the exhibition showed the variety of interpretations of Mansfield's continuing impact on New Zealand artists. Generous support was received from Wellington City Council, Pub Charity and Chris and Kathy Parkin. The exhibition was also part of the KM 130 Festival, a city-wide programme of events, exhibitions and performances from 22 July to 22 October celebrating Katherine Mansfield's 130th birthday.



John Walsh restoring mural *A Portrait of Ūawa Tolaga Bay in 1980*. (1979-80). Oil on board. Collection of the artist. Photo by David Langley.

## John Walsh - A Portrait of Ūawa Tolaga Bay

**8 November - 10 February 2019**

This exhibition, curated by the artist and Helen Kedgley, presented a major survey of Walsh's portrait paintings. The 20-metre long *A Portrait of Ūawa Tolaga Bay in 1980*, was shown in public for the first time since the 1980s, together with 14 portraits of individuals in the artist's life and community. Our thanks go to Creative NZ and the Stout Trust for making this spectacular exhibition possible.

## New Zealand Portrait Gallery Exhibitions Touring New Zealand in 2018

### *Strangely Familiar: Portraits by Wayne Youle*

**28 October - 8 January  
2018**

Waikato Museum, Hamilton

**23 January - 18 March  
2018**

Pah Homestead, Auckland

**21 April - 12 August 2018**

Aratoi Wairarapa Museum  
of Art and History,  
Masterton

### *2018 Adam Portraiture Award*

**12 - 14 June 2018**

BNZ Head Office Gallery,  
Auckland

**3 July - 19 August 2018**

Pah Homestead, Auckland

**21 September - 14  
October 2018**

Percy Thomson Gallery,  
Stratford

**15 December 2018 - 22  
January 2019**

Millennium Art Gallery,  
Blenheim

## Partner Exhibitions

### **Redefine Refugee**

**16 - 20 June 2018**

This year the Portrait Gallery collaborated with Changemakers Refugee Forum to commemorate World Refugee Day on 20 June. Shed 11 was the venue for a special exhibition by the Aotearoa Resettled Community Coalition (ARCC) to showcase photographs by staff photographer, Nando Azevedo. These celebrated the contributions of former refugees who have settled in New Zealand.



*Portrait of Ye.* Photo by Nando Azevedo. Part of New Zealanders Now project created by Aotearoa Resettled Community Coalition (ARCC).

### **TIPU**

**23 - 30 June 2018**

Our 2018 collaboration with the Artist-in Residence programme sponsored by the Samuel Marsden Collegiate School featured the work of Bridget Reweti. This exhibition focused on her work with analogue photography to explore the nature of light in native plants, particularly in the Karori area.

# The Deane Gallery

The Deane Gallery, generously funded by Sir Roderick and Gillian, Lady Deane, provides an intimate space for exhibitions featuring works from the New Zealand Portrait Gallery's own collection. In 2018 the exhibition programme was:

## Portrait Plus

**7 November 2017 - 25 March 2018**

A multi-media exhibition curated by 2017 Liz Stringer curatorial interns Nicola Caldwell and Peter Derksen showing portraits of creative women with examples of their work.



Jane Ussher *Mavis Rivers* 1990. NZPG collection.

## Situated Selves

**27 March - 15 July 2018**

Curated by the Director, Jaenine Parkinson, this exhibition drew on photographs in the Portrait Gallery's permanent collection to illustrate how portrait photography evolved from the 1960s away from traditional studio images to more informal documentary style portraits of subjects in significant settings.

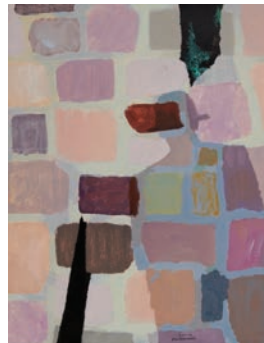


Matt Grace Gregory O'Brien and Jenny Bornholt (after Robin Morrison) 2015. Artist's print. NZPG collection.

## Colours of a Life: Douglas MacDiarmid

**13 July - 23 September 2018**

This special exhibition celebrating the life and art of expatriate New Zealand artist Douglas MacDiarmid marked the launch of the biography of the artist written by his niece, Anna Cahill. The exhibition surveyed MacDiarmid's vibrant portraits and figurative works.



Douglas MacDiarmid *Self-portrait on wet paving stones* 2010-13. Acrylic on paper, Private collection, Wellington



## Worn Identities

28 September - 16 December 2018

Curated by Robert Laking, Liz Stringer curatorial intern for 2018, this exhibition explored how the choice of clothing in a portrait reveals the subject's character and life. It also included works by Yvonne Todd showing how viewers can be deceived by appearances to jump to the wrong conclusions about a subject.

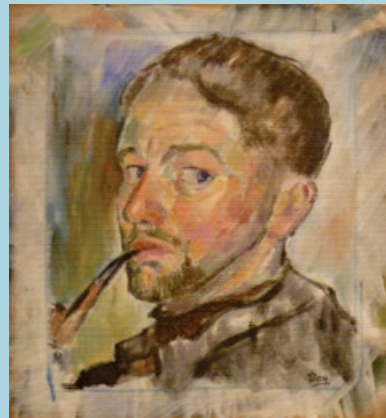


Unknown *Marriage Portrait R J Kelly* 1905.  
NZPG collection

## Reflections on the Self

21 December 2018 - 3 March 2019

Also curated by Robert Laking, 2018 Liz Stringer curatorial intern, this exhibition examined the role of self-portraits in allowing artists to express their moods, thoughts, feelings, and style. The exhibition featured the works of two artists in the Gallery's permanent collection, Melvin Day and Alan Pearson, as well as two contemporary artists, Jordana Bragg and Bryce Galloway.



Melvin Day *Self-portrait with beard and pipe*  
c. 1959-50. Oil on board. NZPG collection

# Public Programmes

The Gallery's Public Programmes grew in number and quality during 2018. Over 30 events were planned and organised to increase visitors' intellectual, aesthetic and sensory appreciation for the artworks in our exhibitions and encourage their participation in Gallery and city-wide events.

**31** **847**  
**EVENTS** **Participants**  
**18** **Artists &**  
**Topics**  
**839** **Students**

## Artist and Curator Talks



Penelope Jackson, curator of *Katherine Mansfield: A Portrait*

Some 15 talks were given by the artists and curators in the 2018 exhibition programme. These included John Walsh, Helen Kedgley, Penelope Jackson, Greg O'Brien, Sarah Laing, Julia Holden and Anna Cahill as well as the Adam Award judge, Angus Trumble, and two of the Adam Award finalists Charlotte Giblin and Melissa MacDougall.

## KM 130 Festival

### 22 July - 22 October 2018

The KM 130 Festival was a city-wide programme of events, exhibitions and performances celebrating Katherine Mansfield's 130th birthday. In addition to our exhibition, *Katherine Mansfield: A Portrait*, and artist and curator talks we hosted:

- a rehearsal of Circa Theatre's production of *Bloomsbury Women and the Wild Colonial Girl*, a play about Mansfield's relations with Virginia Woolf and other members of the Bloomsbury Group
- a workshop by award-winning cartoonist, graphic designer, story-teller and author of *Katherine Mansfield and Me*, Sarah Laing, on the process of creating a graphic biography



Sarah Laing, Cover art for her biography *Mansfield and Me* (2016)



- a talk by Redmer Yska on his popular book, *A Strange Beautiful Excitement* about Wellington during the writer's years in the city and its impact on her life and work
- a presentation by fashion historian Leimomi Oakes, using historical costumes inspired by Mansfield's writings and the Suffragette Movement



Leimomi Oakes. Photo by Tony McKay

## Special Events



Justine Turnbull with her winning portrait *Reckoning 2017* (Freya Kelly). Acrylic and oil on canvas

Justine Turnbull, winner of the 2018 People's Choice Award, was presented with her prize of \$2,500 at a ceremony at the end of the Adam Award exhibition on 27 May.

Certificates were also awarded to the three runners-up - Marcus Ebbet for *Constable Rob Eastham with Ike*, Gareth Barlow for *George Nuku*, and Jeremy McCormick for *Waves of Emotion*.

John Walsh's landmark portraiture exhibition provided the focus for several important events, including:

- a personal reflection led by Dr Wayne Ngata discussing Ūawa-nui Ūawa-tangata: Tolaga Bay People and Place
- a conversation between Witi Ihimaera, Darcy Nicholas, Ella Henry, and John Walsh on the memories, issues and controversies faced by Maori

artists and creative people during the 1980s when they were at the artistic coal-face of the Maori cultural renaissance.

## Founders Day

Jane Tolerton ONZM, one of New Zealand's best-known biographers, journalists and historians, gave a short reflection on women's suffrage to the annual gathering of Friends and supporters on 2 December to celebrate the founding of the Gallery in 1990.



Jane Tolerton at Founders Day

## Saturday Sittings

Ten Saturday Sittings were held during 2018. These free monthly sessions attracted some 160 portraiture enthusiasts, ranging from complete beginners to accomplished artists, and gave them the opportunity to draw and paint a portrait in a relaxed collegial setting. Coffee was provided by Mojo.

## Education Tours

This year our Public Programmes received some 840 students on pre-booked guided tours. These included 675 primary and secondary school students from 22 schools in the wider Wellington region as well as students from as far afield as Ashburton, Hastings, Rotorua, Te Awamutu and Argentina. The other 165 students were from tertiary and other educational institutions.



School group at John Walsh exhibition.



School drawing group at Douglas MacDiarmid exhibition.



# Administrative Matters

Late 2017 and early 2018 saw a complete change of professional staff following the resignation for varying reasons of long serving staff members. Following a period of familiarisation for the new staff the administration of the Gallery is now running very smoothly under the guidance of new Director, Jaenine Parkinson. A great deal has been achieved in the administrative area in the last year:

- a new, much improved lighting system has been installed. We are grateful to the Friends, and

- the Gallery shop is now selling a much wider range of goods, and provides a colourful and welcoming entrance to the Gallery. The profit from shop sales is growing steadily and is a welcome addition to the Gallery's income.
- the website is being updated in particular to make it possible to accept invitations and to make ticket and donation payments online, and to link with the professional museum collection management tool,

## **“Thanks are due particularly to Jaenine Parkinson for her excellent leadership, management and hard work...”**

Charlotte Williams and David Kember for their generous donations, and to the many individuals in the Gallery community who supported the special fundraising effort.

- new accounting and payroll systems have been set up, allowing us to generate more management information, and enabling the Director and others to track and analyse our income and expenditure much more efficiently.
- eHive. A working group, led by the Director, is doing the work in-house, using an online subscription-based building and hosting service. The costs will accordingly be very modest. The updated website is expected to be completed mid-year.
- renewed efforts are being made to increase the income from hiring out Shed 11 for functions and events after income from hiring out the Gallery in 2018 was down on last year's figure.



In 2019 the focus of the Administration Committee will include determining how best to address temperature and humidity control in Shed 11, refining our Business Continuity Plan and making recommendations to the Board on updated governance documents.

The three salaried staff - the Audience Engagement Coordinator, appointed in the second half of 2017, the Director in December 2017, and the Gallery Registrar and Administrator appointed in January 2018 - are all

highly professional, committed to the Gallery, and very hard working. The Board is very appreciative of the work done by the committed group of Gallery supervisors who staff the front desk and undertake many administrative tasks. Thanks are also due to all the volunteers who help run the Gallery, and particularly to the Director, Jaenine Parkinson, for her excellent leadership, management, innovation and hard work.

**Diane Morcom**

Chair, Administration Committee

# Fundraising

The Gallery has maintained and advanced its high standards over the year, despite continuing financial challenges. We cannot ignore the fact that more funding is desperately needed if the Gallery's ongoing success is to be assured. At present we rely on grants and donations received each year.

The loyal support of individual donors is invaluable to us. Our major donors are listed at the back of this report. We look forward to adding many new names to our supporters' list in 2019.

We are grateful for the Wellington City Council's \$20,000 annual contract funding for the last three years to help with operational costs. Such multi-year grants provide some security for the Gallery. The Deane Endowment



Participants gather in Shed 11 before going on November's art tour.

Trust, the Aileen Drewitt Trust, Guild Holdings Ltd, the Jack Jeffs Trust, and private donors who have pledged donations of \$5,000 or more for five years provided essential ongoing underpinning for our activities.

A grant from the Freemasons Foundation helped the Gallery's bottom line at a crucial point near the end of the year. The NZ Community Trust and the Wellington Community Trust provided assistance with meeting the costs of the salaries of the Director and the Audience Engagement Coordinator. We are grateful to Morrison Kent for their support to the Gallery. Liz Stringer again provided the funds for an intern to work on Deane Gallery exhibitions.

Funds to replace the Gallery's lighting came from many individuals, including a very generous contribution from the Kember-Williams family. The Friends of the NZ Portrait Gallery underwrote the project and in the event made a substantial donation to ensure its completion.

Special grants are essential to help cover the costs of exhibitions. Applications are made for each new show and positive results can never

be taken for granted. In 2018 grants were received from Pub Charity, Creative New Zealand, the Stout Trust and the Mayor's discretionary fund for our two main curated exhibitions. And once again we were indebted to the Adam Foundation which enabled us to hold our biennial flagship Adam Portraiture

The 2018 fundraising art tour was again much enjoyed by the 95 participants, and raised over \$10,000 for the Gallery. Our warmest thanks go to the seven collectors who opened their homes to us, and to Dana Hudson and her friends for providing catering support.

## **“A marked improvement in media coverage was due to Chris Parkin’s generous sponsorship of a professional publicist”**

Awards show with handsome prizes for the winners.

A marked improvement in press coverage of the Gallery's activities in 2018 was due in very large part to Chris Parkin's most generous sponsorship of a professional publicist, Rebecca Reed of Arriba PR.

It is important that we build up some reserves for future years.

One important way to do this is through bequests, and we hope all our private supporters will include the Gallery in their wills.

**Suzanne Blumhart**

Chair, Development Committee

# Friends of The New Zealand Portrait Gallery



Liz Stringer receives an Honorary Life membership

The ongoing interest and commitment from the Friends give the New Zealand Portrait Gallery the wind beneath its wings. The Friends are the lifeblood of any institution and the Portrait Gallery is no different. The Friends bring in new networks, contacts and energy which the Committee needs in order to expand and contribute to the Portrait Gallery.

The Friends' support is vital and enabled the Committee to deliver a range of initiatives through 2018, including:

- The Friends' art tour to Sydney and Canberra in late June was a highlight. The tour was brilliantly organized and led by Joy Dunsheath. She took our convivial group of 20 on a fascinating voyage of art and creativity with private tours to

the Archibald Prize exhibition at the Art Gallery of New South Wales, visits to artists' studios and private collections, to Admiralty House in Sydney and Parliament House in Canberra, and of course the National Portrait Gallery of Australia. Joy has previously taken groups to the portrait galleries of Europe and Australia, and we hope this recent, successful trip won't be her last!

- Thanks to the generosity of the Friends, the Committee was able to donate \$18,000 to the Lighting Appeal and complete the fundraising goal set by the Gallery.
- The ever popular visits to local artists' studios continued through the generosity of John Walsh and Elizabeth Thomson. These visits are a privilege and



The Friends visit the Art Gallery of NSW, Sydney



an opportunity to get up close and personal with some of New Zealand's most celebrated artists.

- A day trip was made on 20 March to a private art collection in the Wairarapa and to Elizabeth Thomson's exhibition *Cellular Memory* at Aratoi Wairarapa Museum of Art and History.
- New Friends were welcomed at a reception held at the Gallery on

Friends with an Honorary Life Membership presented by Diana Morrison.

- The Friends supported exhibition openings and promoted ongoing awareness of the Portrait Gallery and membership of the Friends.

I am grateful to the energetic and hard-working members of the Committee as well as the

## "The Friends art tour to Sydney and Canberra in late June was a highlight"

30 August and Jaenine Parkinson spoke about her first nine months as Director.

- Founders Day was co-hosted by the Trustees and the Friends. Liz Stringer's significant contribution to the administration and well-being of the Gallery was acknowledged by the

Friends volunteers. On behalf of the Committee, I thank all members for their continued support of the Friends and the Portrait Gallery in many different ways, and look forward to an exciting, stimulating 2019.

**Jane Kirkcaldie**  
President

# In Memoriam

## Denis Adam CNZM OBE (1924 - 2018)



Denis Adam

It is with great sadness that we record the passing of our great benefactor and supporter, Denis Adam, on 17 October 2018. Denis and his wife Verna have been with the New Zealand Portrait Gallery since its inception in 1990. He was an inspiration to those who founded the Gallery, and an immense support to the Trustees, staff and supporters in the years since then. The creation and maintenance of the biennial Adam Portraiture Award that bears his name would have been impossible without his creative endeavours as well as his financial support. Over the years we have all taken tremendous heart from his enthusiasm, encouragement and optimism. There was such a delightful infectious quality in his support; anyone who heard his impromptu speeches at the Adam presentation galas could not help but feel the purpose and inspiration that he communicated.

Denis Adam was a wonderful, vibrant and generous man. We shall miss him enormously, but his

memory will live on, along with the Adam Portraiture Award that he founded and which we will continue to cherish and develop in his name.

## Natalie Smith MBE (1915 - 2018)

We were saddened to learn of the death on 17 July 2018 of Natalie Smith, inaugural President of the Friends Association.



Sally Hope *Portrait of Natalie Smith* 1994

Natalie and her husband Bill were close friends of the Gallery's founders, Judy and Bill Williams. Her contribution across a wide range of areas and her inspirational leadership were hugely important to the Gallery's success from the outset. The Friends honoured her with a presentation at the time of her 100th birthday in 2015. At the Founders Day event on 2 December, Natalie's family presented the Gallery archives with a print of Sally Hope's portrait of Natalie.

# Trustees and Officers of The New Zealand Portrait Gallery 2018

<b>Patron</b>	Her Excellency The Right Honourable Dame Patsy Reddy GNZM QSO, Governor-General of New Zealand
<b>Trustee Emeritus</b>	Denis Adam, CNZM (until 17 October 2018)
<b>Trustee Emerita</b>	Elizabeth Stringer (from 2 December 2018)
<b>Trustees</b>	Dr Keith Ovenden (Chairman) Michael Curtis Hugh Fletcher Dr David Galler Helen Kedgley Diane Morcom CNZM, CVO Donna Nicolof Elizabeth Stringer (until 5 June 2018) Eve Wallace
<b>Honorary Treasurer</b>	Richard Tuckey (until 31 March 2018) Michael Curtis (from 1 April 2018)
<b>Management Board</b>	Denise Almao Suzanne Blumhardt
<b>Director</b>	Jaenine Parkinson MA (Auckland)
<b>Registrar &amp; Administrator</b>	Talei Langley (from 23 January 2018)
<b>Audience Engagement Coordinator</b>	Melissa O'Brien BA (Hons) (VUW); PGCert Paralegal Studies (USD)
<b>Gallery Designer</b>	Jess O'Brien
<b>Gallery Supervisors</b>	Hannah Amundsen, Sambrene Chandler, Brianah Lee, Gina Matchitt, Hanahiva Rose, Samuele De Stefani, Ian Ngan and Mike Tiller

**Administration Committee**

Diane Morcom  
(Chair)  
Denise Almao  
Michael Curtis  
Niels Holm  
Helen Kedgley  
James Kember  
Dr Keith Ovenden  
Jaenine Parkinson  
Liz Stringer  
(until 5 June 2018)

**Acquisitions and Programme Committee**

Jaenine Parkinson  
(Chair)  
Suzanne  
Blumhardt  
Jennifer Button  
Dr Pamela Gerrish  
Nunn  
Christopher  
Johnstone  
Joan McCracken  
(ATL)  
Dr Keith Ovenden  
Richard Wolfe

**Finance and Planning Committee**

Michael Curtis  
(Chair)  
Denise Almao  
Suzanne  
Blumhardt  
Diane Morcom  
Donna Nicolof  
Dr Keith Ovenden  
Jaenine Parkinson

**Friends Committee**

Jane Kirkcaldie  
(President)  
Jane Aim  
Denise Almao  
Jennifer Button  
(Deputy)  
Joy Dunsheath  
Diana Morrison  
Gwynn Narraway  
Sue Upton  
Janet Waite  
Carla Wild

**Development Committee**

Suzanne  
Blumhardt (Chair)  
Denise Almao  
Dana Hudson  
Dr Keith Ovenden  
Jaenine Parkinson  
Janet Waite

**Liz Stringer Curatorial Intern**

Robert Laking

**VUW Museum and Heritage Studies Intern**

Olivia Martin

**Gallery Volunteers**

Ruby Abraham  
Margaret Calder  
Lizzie Callaghan  
Rosemary Cole  
Elizabeth Ellis  
Laura Hubbard  
Robert Laking  
Cr Paul Lambert  
Olivia Martin  
Grace McNulty  
Ian Ngan  
Jess O'Brien  
Kath  
O'Shaughnessy  
Margaret Walls  
Jane Wright

# Gallery Finances

Summary financial statements are set out below. These were prepared prior to the conducting of a review engagement as required under the Charities Act 2005. The full 2018 financial statements as reviewed by the Accounting for Charities Trust will be available on the NZ Portrait Gallery's website and the Department of Internal Affairs Charities Services website.

## THE NEW ZEALAND PORTRAIT GALLERY TRUST STATEMENT OF FINANCIAL PERFORMANCE For the year ended 31 December 2018

	NOTES	2018	2017
		\$	\$
<b>Revenue</b>			
Donations, fundraising and other similar revenue		331,984	305,552
Fees, subscriptions and other revenue from members		7,844	7,071
Revenue from providing goods or services		80,157	86,694
Interest, dividends and other investment		1,912	528
<b>Total Revenue</b>		<b>421,897</b>	<b>399,845</b>
<b>Expenses</b>			
Expenses related to public fundraising		1,660	6,070
Volunteer and employee related costs	4	201,193	162,388
Costs related to providing goods or service	1	272,517	229,884
<b>Total Expenses</b>		<b>475,369</b>	<b>398,342</b>
<b>Surplus/(Deficit) for the Year</b>		<b>(53,472)</b>	<b>1,503</b>



# STATEMENT OF FINANCIAL POSITION

As at 31 December

NOTES

2018

2017

		\$	\$
<b>ASSETS</b>			
<b>Current Assets</b>			
Bank Accounts		304,545	344,536
Debtors and prepayments		5,315	2,321
Inventory		6,135	0
<b>Total Current Assets</b>		<b>315,994</b>	<b>346,857</b>
<b>Non-Current Assets</b>			
Property, Plant and Equipment		61,927	26,447
Art Collection	3	133,812	
133,812			
Shed 11 Prepaid Rent	1	957,000	1,015,000
<b>Total Non-Current Assets</b>		<b>1,152,739</b>	<b>1,175,259</b>
<b>Total Assets</b>		<b>1,468,733</b>	<b>1,522,116</b>
<b>LIABILITIES</b>			
<b>Current Liabilities</b>			
Creditors and accrued expenses		18,592	10,468
Deferred Income		12,104	20,469
Other current liabilities		2,045	1,715
<b>Total Current Liabilities</b>		<b>32,741</b>	<b>32,652</b>
<b>Total Liabilities</b>		<b>32,741</b>	<b>32,652</b>
<b>Total Assets less Total Liabilities (Net Assets)</b>		<b>1,435,992</b>	<b>1,489,463</b>
<b>Accumulated Funds</b>			
Capital contributed by owners or members		1,333,339	1,331,836
Accumulated surpluses or (deficits)		(53,472)	1,503
Reserves	2	156,125	156,125
<b>Total Accumulated Funds</b>		<b>1,435,992</b>	<b>1,489,464</b>

## Notes:

1 The Trust's total accumulated funds of \$1,435,992 mostly consist of the prepaid gallery rental of \$957,000 which accounting rules require to be allocated over the period of the lease. The annual rental allocation of \$58,000 is included in the Statement of Financial Performance under Costs related to providing goods or services.

2 The Trust's reserves include \$100,000 allocated by the Trustees to a Leasehold Renewal Fund to provide for a new lease on the expiration of the current 25-year lease.

3 An insurance valuation of the collection was made in December 2016. A 40% portion of the total valuation has been taken up in the Trust's accounts.

4 The Trust is dependent on the voluntary services of many supporters of the Gallery, the value of which is not recognised in the financial statements.

# Gallery Benefactors 2018

## Masters Circle

Denise Almas  
Hugh Fletcher and  
Rt Hon Dame Sian Elias  
Kate Fortune  
Peter and Annabel Graham  
Sir Michael and  
Lady Hardie Boys  
Charlotte Williams and  
David Kember  
Jonathan and Cristina McHardy  
Avenal and John McKinnon  
Dr Keith Ovenden  
Chris and Kathy Parkin  
Collin Post  
Elizabeth Stringer and  
Rob Morrison  
Janet Waite

## Artists Circle

Suzanne Blumhardt  
Helen Kedgley  
Diana Morrison

## Canvas Circle

Sarah Acland  
Rick and Lorraine Christie  
Anonymous  
Barbara and Don Crump  
Peter and Carolyn Diessl  
Robin Dossor  
Joy Dunsheath  
Beverley Eriksen  
Val Fergusson  
Rebekah Henderson Prof.  
Les Holborow  
Sir Kenneth and Lady Keith  
Jane and Denis Kirkcaldie  
Diane Morcom  
Jim Norris  
Neil and Rachel Plimmer  
PM Reese and JL Hansen  
Paul Ridley-Smith  
David Shand  
Bryan Shepherd  
Anna Shires  
Gordon and Marie Shroff  
Alison Stokes Supertonic  
Choir  
Edith Tripp  
Prof. Ann Trotter  
Judith Trotter  
Kirsty Wood  
Jane and Paul Wright

## Graphite Circle

Virginia and Malcolm Abernethy  
Elizabeth Alley  
Tony and Kristin Arthur  
Beverly Shore Bennett  
Gael Black  
Jocelyn Brandon  
Jennifer Button  
Errol and Jennifer Clark  
Dame Margaret Clark  
Lynne Ciochetto  
Paul Deans  
Hon JA and Mrs D Doogue  
Diana Duff Staniland  
Sally Edmonds and  
Lindsay Taiaroa  
Elizabeth Ellis  
Peter Fabian  
Jonathan Gooderham  
Marion Grant  
Hon. LM Greig  
Janet Grieve  
Dr Paul Herrick  
Josephine Karavasil  
Ann and George Laking  
Peter Leslie  
Julia O'Connor  
Rupert Rokeby-Johnson  
Sarah Romans  
John Saker  
Rachel and David Underwood  
John and Sue Upton  
Helena Walker  
Michael and Margaret Walls  
Sir Roderick and Lady Weir  
Dr Ann Weston  
David Zwartz

We are grateful to all those who have supported the Gallery with donations and koha.

## Corporate Sponsors, Trusts and Foundations

### Principal Partners

Adam Foundation



Deane Endowment Trust

Absolutely Positively  
Wellington City Council

Me Heke Ki Pōneke

Guild Holdings Ltd



Aileen Drewitt Trust

### Major Partners



ARTS COUNCIL OF NEW ZEALAND - TOI AOTEOROA



Friends of the  
New Zealand  
Portrait Gallery



### Programme Partners



Te Adam  
Pātaka Art  
Toi Gallery

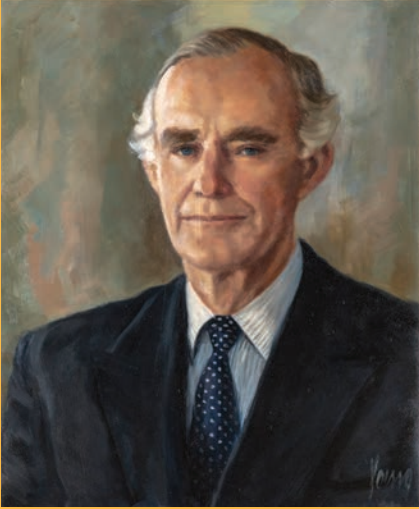


Te Puna Mātauranga o Aotearoa



**SHARP**  
Be Original.

# Portrait Acquisitions



Michael Young Admiral Sir (Allan) Gordon Tait KCB, DSC, RN (retired), Second Sea Lord. Oil on canvas. Gift of Ms Lucy Ralston.



Alan Pearson Self-Portrait "Goodbye to All That!" (Robert Graves) 2010. Oil on canvas. Gift of the artist.



Logan Moffat Elam 2017 (Jayden Plank and Harry Telfer) 2017. Oil on canvas. Winner of 2018 Adam Portraiture Award. Gift of the artist.





Front cover: Photo by David Langley. Back cover: Photo by Jess O'Brien

