

New Zealand Portrait Gallery Te Pūkenga Whakaata

Annual Report 2021



Chair's Introduction

On behalf of the Trustees and Management Board of the New Zealand Portrait Gallery Te Pūkenga Whakaata, it is my pleasure to present our Annual Report for 2021.



This has been a year of both challenge and achievement for the Gallery as we continued to wrestle with fallout from the pandemic.

Despite having to close for three weeks during the August/September lockdown and cancel an exhibition opening at short notice, the Gallery still presented 10 innovative, stimulating high quality exhibitions in 2021. The most significant of these was the inaugural *Kiingi Tuheitia Portraiture Award* for emerging Māori artists to create portraits of their tūpuna (ancestors) in any medium. The Award attracted 128 entries from around the country and the exhibition of the 49 finalists' works was opened by Kiingi Tuheitia in an impressive pōwhiri and award ceremony on 27 May. After closing in Wellington, the exhibition began an 18-month tour to galleries and museums in the North and South Islands. This Award, developed in close cooperation with the Kiingitanga, has expanded the Gallery's focus on the genre of portraiture and demonstrated the artform's continuing relevance to contemporary issues and audiences.

Details of all 10 exhibitions are outlined in the report below. We are very grateful to the artists, curators and lenders involved in bringing these remarkable exhibitions to the Gallery.

The Board's priorities at the start of the current 2021 - 24 triennium included:

- raising the Gallery's profile as an important New Zealand institution though mounting at least four high quality exhibitions with wide-ranging themes exploring national identity that speak to diverse communities and audiences
- raising the Gallery's national profile, public support and awareness of its role, particularly in Auckland
- establishing sounder financial underpinnings to provide financial certainty and avoid future deficits
- strengthening our national mandate by expanding the exhibition touring programme.

As this report shows, all these priorities were advanced in 2021, thanks to an engaging, thought-provoking exhibition programme and the expertise and commitment of our staff. Although the Director, Jaenine Parkinson, was on parental leave in 2021, Acting Director Brian Wood assisted by our tiny professional team maintained the direction she had set and delivered an exceptional year's work despite the constraints imposed by a lack of secure ongoing funding and the stresses of launching a bold new national portrait competition.



Our Patron, HE The Rt Hon Dame Patsy Reddy and Sir David Gascoigne are welcomed to the Kiingi Tuheitia Portraiture Award exhibition by Anna-Marie White, Brianah Lee, Brian Wood, Talei Langley, and Denise Almao

The Board is deeply grateful to them for their contribution and dedication in delivering exciting, high quality exhibitions and public programmes of interest to all segments of the increasingly diverse population of Aotearoa New Zealand. We acknowledge the toll it sometimes places on them and on the loyal band of Friends and volunteers who support us.

We are deeply indebted to former Governor-General, The Right Hon Dame Patsy Reddy, for generously hosting a reception at Government House, Auckland, in July to celebrate our 30th anniversary and launch the campaign to raise our profile in Auckland.

We are also very grateful to our sponsors for their backing of this year's exhibition programme, in particular the Office of the Kiingitanga, Bethlehem Charitable Trust, the Turangawaewae Marae Trust, Creative New Zealand, the Stout Trust and Lion Foundation. Special thanks must also be given to the Freemasons Foundation, Wellington City Council, Aileen Drewitt Trust, the Deane Endowment Trust, Guild Holdings Ltd, Liz Stringer, and Chris and Kathy Parkin for their generous support which has been a critical underpinning of our operations. (Less than 10% of our operational funding comes from central or local government.)

Yet even the generous support of our sponsors is not enough to sustain the Gallery from year to year, let alone guarantee its future as a nationally significant institution in New Zealand's cultural life. The Gallery remains deeply dependent on private donations and grants, as well as our own fundraising initiatives, to stay afloat. This year the Gallery held a highly successful Benefit Concert in partnership with NZ Opera that raised \$10,000 to help cover our operating deficit. The Covid wage subsidy and support payments were additional factors in helping us get through the difficult operating environment of 2021. The Board was also grateful to receive two substantial private donations this year that provide a level of defence while it pursues long-term financial security.

Equally welcome was a grant from Creative New Zealand to cover Covid year challenges. This grant of \$150,000 is to fund our 2022 exhibition programme and will make a huge difference to our work for that year. But the Gallery's future will not be assured until such time as we

receive the recognition and funding of a national institution. The Board will continue to explore every avenue to secure the Gallery's long-term sustainable future.

This year the Board farewelled Donna Nicolof who stepped down in June after eight years as a valued trustee and colleague. She goes with our warmest thanks for her generous service and best wishes for the future. At its December meeting the Board decided to increase the maximum number of trustees to 11, which will enable it to appoint additional trustees in Auckland and Christchurch.

I also wish to thank my colleagues on the Board, the Director and Acting Director, and their team, and the many volunteers and supporters with whom I have been privileged to work over the past year for their support, commitment and hard work in delivering a successful year's programme of which we can be justifiably proud.

Dr Alan Bollard
Chairman

Exhibitions

The Gallery's exhibitions programme in 2021 was again impacted by Covid-19. The Gallery closed for lockdown from 18 August to 10 September, and annual visitor numbers fell by another 8% to 25,816. Despite having to cancel the opening of one exhibition and other disruptions, we still managed to present five exhibitions in the Main Gallery and five in the smaller Front Gallery. The most notable of these was the inaugural *Kiingi Tuheitia Portraiture Award* which was opened by Kiingi Tuheitia at a pōwhiri and award ceremony on 27 May. The exhibitions listed below were exceptional for their quality and enhanced the Gallery's growing national reputation.

10 **25,816** VISITORS
EXHIBITIONS
27 PUBLIC PROGRAMMES

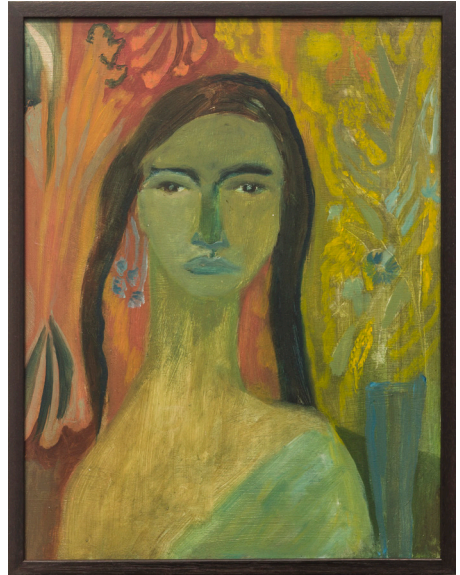
Star Gossage: He Tangata The People

26 November 2020- 14 February 2021



Star Gossage Boy in the harihari jumper 2019

This exhibition of portraits by Star Gossage (Ngati Wai, Ngati Ruanui) was curated by Grant Hall and Jaenine Parkinson. The paintings arise from the artist's personal truth in portraying the inter-connectedness of wahine (woman) and whenua (land). In her wāhine-centred world, the identity of people is shown as inseparable from wairua (spirit), whenua (land), whakapapa (ancestry) and whanau



Star Gossage Au II 2012

(family). This exhibition brought together 20 years of the artist's practice where portrait and figure are used to communicate themes of unity, grief, compassion and aroha. The Gallery is very grateful to the Stout Trust for its sponsorship of this exhibition and to Chris and Kathy Parkin for supporting the publicity programme.

Kākahi: Peter and Sara McIntyre

24 February - 16 May 2021



Peter McIntyre *Māori children, King Country 1963*

This exhibition portrayed the small King Country settlement of Kākahi as captured in paintings by the eminent war artist, Peter McIntyre, and in contemporary photographs by his daughter, Sara. This pairing of their works honours the town's people, marae, village, rivers and landscape. The public programmes for this exhibition included a community conversation attended by over 120 people. The exhibition was generously sponsored by the Lion Foundation and co-curated by

Director Jaenine Parkinson and Acting Director Brian Wood.



Sara McIntyre *Kākahi Marae 2008*

The Kiingi Tuheitia Portraiture Award 2021

28 May - 15 August 2021



Bodie Friend *Nana Pat* 2021. Winner of 2021 Kiingi Tuheitia Portraiture Award.

This innovative new Award was initiated by King Tuheitia to encourage emerging Māori artists to showcase their creativity by depicting their tūpuna in any medium. Some 128 entries were received from throughout New Zealand and 49 finalists, with works featuring whakairo (carving), raranga (weaving), photography, ceramics and oil paintings, were selected for exhibition by a panel of three distinguished judges (Sir Derek Lardelli, Kura Te Waru Rewiri and Lisa Rehana). On 27 May Kingi Tuheitia attended the pōwhiri and award ceremony before an audience of 650 at the TSB Arena and

opened the exhibition. The winning entry, a photographic portrait *Nana Pat* by Bodie Friend, depicted his great-uncle Pat Kingi. The runner-up was Te Haunui Tuna for his work *Survival*, a digital drawing and video, while the People's Choice award was won by Eleanor Wright for *Paratai*, a charcoal and white chalk portrait on grey paper. We are very grateful to the Office of the Kiingitanga, the Bethlehem Charitable Trust, The Turangawaewae Marae Trust, Wellington City Council, Creative New Zealand, Forsyth Barr and Chris and Kathy Parkin for their generous support of this exhibition.



Bodie Friend is presented with his award by Kiingi Tuheitia



Judges Kura Te Waru Rewiri, Sir Derek Lardelli, Lisa Rehana at the award ceremony



Alicetown kapa haka group welcomes King Tuheitia to the powhiri at TSB Arena.



King Tuheitia sets down his tokotoko paraoa (whalebone walking stick) at the exhibition opening

Autonomous Bodies

16 September - 11 November 2021



Lisa Rehana *Mahuika* 2001

This exhibition brought together figurative portraits by New Zealand women, wāhine, transgender, non-binary and other gender-diverse individuals whose stories have not always been prominent at national institutions.

Curated by Gina Matchitt, it included some 40 exceptional works that focused on expressing experience rather than documenting named individuals. Of all our exhibitions, this was the one most disrupted by Covid-19. The opening reception planned for 25 August had to be cancelled after the country went to Level 4 and opened for a much-reduced season with a low-key event on 16 September.

Because of the pandemic, the associated public programmes were delivered on Zoom rather than in person.

The Friends of the Portrait Gallery contributed a generous grant towards the cost of this exhibition.

Face Time: Portraits from the 1980s

25 November 2021 - 13 February 2022



Glenda Randerson *Carol* 1982

The guest curator of this exhibition, Milly Mitchell-Anyon, was asked to represent the 80s decade through the lens of portraiture and the work of well-known New Zealand artists practising at the time.

The exhibition captured the 'Big Eighties Energy' associated with the decade - the hair, clothes and faces - and spoke to some of the tectonic social, political and economic shifts that occurred during the period. The artworks in the exhibition



Jeffrey Harris *The Prisoner of Love* 1982

were chosen because they each represented a small moment in time.

While the decade has been described as one of optimism, the exhibition's palette of bold primary colours often masked stark subject matter encompassing protest, political change and economic upheaval.

We are very grateful to the Stout Trust for its generous grant towards this exhibition, and to Chris and Kathy Parkin for their support.

New Zealand Portrait Gallery Exhibitions Touring New Zealand in 2021

Jacqueline Fahey's Suburbanites

26 September 2020 -

24 January 2021

Waikato Museum, Te Whare o Taonga
o Waikato, Hamilton

2020 Adam Portraiture Award

19 December 2020 -

31 January 2021

Millennium Art Gallery,
Blenheim

Edith and George: in our sea of islands

25 February - 4 April 2021

Corban Estate Arts Centre,
Henderson

Star Gossage: He Tangata The People

5 May - 22 August 2021

Pah Homestead, Auckland

13 November 2021 -

6 February 2022

Sarjeant Gallery Te Whare o Rehua,
Whanganui

Marti Friedlander: Portraits of the Artists

22 May - 25 July 2021

Waikato Museum Te Whare Taonga
o Waikato, Hamilton

13 August - 19 September 2021

Percy Thomson Gallery, Stratford

10-28 November 2021

Te Uru Waitakere Contemporary
Gallery, Titirangi

2021 Kiingi Tuheitia Portraiture Award

20-21 August 2021

Turangawaewae Marae,
Ngarurawahia

8 December 2021 - 8 May 2022

Waikato Museum, Te Whare o
Taonga o Waikato, Hamilton



Entry to Kiingi Tuheitia Portraiture Award exhibition
at Waikato Museum

The Front Gallery

The Front Gallery is an intimate space for exhibitions that generally feature works from the New Zealand Portrait Gallery's permanent collection. We are especially grateful to the Deane Endowment Trust for its generous sponsorship of these exhibitions. In 2021 the exhibition programme was as follows.



Liz Maw *Elizabeth* (detail) 1999. Oil on board. Private collection.

Portraits of Power/Portraits as Power

17 December 2020 - 14 March 2021

This exhibition was curated by the Gallery's 2020 Liz Stringer Curatorial Intern, Paul Johnston. It examined how portraits can be used as tools of state and institutional power - as well as in ways that undermine or subvert systems of power.



Marianne Muggeridge *Meren and Josie* 2002
Adam Award winner 2002

Celebrating 20 Years of ADAM Winners

18 March - 23 May 2021

The Adam Portraiture Award has been generously sponsored by the Adam Foundation since 2002. This exhibition brought together the eleven portraits that have won this prestigious biennial portraiture competition since it began in 2000. The winning works demonstrated a diversity of technique, style, size, subject matter and medium, highlighting the growing appeal, skill and potential of portraiture. The exhibition was curated by Gallery Registrar Talei Langley and Acting Director Brian Wood.



King Tuheitia's tokotoko paraoa

Kiingi Tuheitia Genealogy Exhibition

28 May - 15 August 2021

This small exhibition, presented in collaboration with the Office of the Kiingitanga, included a genealogy chart covering 161 years of the Māori monarchy, an oil painting of the second Māori King Tawhiao Matutaera Potatau Te Wherowhero by Gottfried Lindauer (1882), a photograph of the current King Tūheitia Potatau Te Wherowhero by Erica Sinclair, as well as King Tuheitia's tokotoko paraoa (whalebone walking stick) carved by Taaroi Rawiri (2007).



Nick Cuthell *Self-portrait* 2009 chosen by Carla Wild, alongside Betty Rhind *Beverley Shore-Bennett* 1944-45 chosen by Jennifer Button

Friends' Favourites

10 September - 5 December 2021

This exhibition was held to celebrate the work of the Gallery's Friends who enthusiastically supported the Founders, Judy and Bill Williams, in mounting and promoting the Gallery's exhibitions during its first 15 years when it had no permanent home, no professional staff and no funds. This exhibition was an opportunity for them to once again be directly involved in curating an exhibition. The 15 works in the exhibition were chosen by members of the Friends Committee from the Portrait Gallery's permanent collection. Each work had a special meaning or connection to the person who made the selection, which was described alongside the work. A special tea-towel with a copy of the self-portrait by Sydney Lough Thompson (1917) was also produced to commemorate the exhibition.



Lizzie Errington, 2021 Liz Stringer Curatorial Intern, at the opening of her exhibition *Unfinished Portraits*

Unfinished Portraits

10 December - 13 March 2022

This exhibition, curated by Lizzie Errington, our 2021 Liz Stringer Curatorial Intern, focused on unfinished portraits. It embraced works that were left incomplete because of circumstances and those left unfinished as an aesthetic or stylistic choice.

Public Programmes

The Gallery's Public Programmes were also affected by Covid-19. When the Gallery had to close for lockdown for three weeks in August/September, exhibition schedules had to be rejigged and a number of public events had to be cancelled, postponed, down-sized to meet gathering restrictions or transferred to Zoom. Even so, there was an encouraging increase in activities and participation by comparison with 2020. Despite the lack of international visitors, our domestic visitor numbers were running 20% ahead of 2020 until the August lockdown. By the end of 2021, visitor numbers had recovered to within 8% of 2020. This demonstrated the continuing appeal of the range of intellectual, aesthetic and sensory experiences we provide to increase visitors' appreciation of our exhibitions. There were also a number of informal attractions for children such as drawing materials in our new whanau space at the rear of the Gallery.

27
EVENTS

570+
Participants

15 **Artists &**
Topics

543 **Students**

Artist and Curator Talks

This year we organised nine talks by artists, curators and subject specialists in support of our 2021 exhibition programme. Renowned artist Lisa Reihana, one of the three judges of the inaugural *Kiingi Tuheitia Portraiture Award*, held a public conversation with Bodie Friend, winner of the 2021 Award. Six of the other finalists in the Award also gave talks: Tessa Williams gave a Para Kore workshop on creating pigments and paint from plants and natural soils; Shannon Te Rangihaeata Clamp, Suzanne Tamaki, Jamie Berry, Regan Blazer and Waiāio Ngā Mōrehu Elkington each spoke about their artwork and practices; Grant Hall, co-curator of the exhibition *He Tangata The People* gave a workshop on the painting style of Star Gossage; Sara McIntyre, co-curator of *Kākahi: Peter and Sara McIntyre* held a community conversation with Greg Donson, Public Programmes Manager at Whanganui's Sarjeant Gallery, and residents of Kākahi on life in the settlement (this was the year's most popular event); Milly Mitchell-Anyon, curator of *FaceTime: Portraits from the 1980s* shared her insights on the themes, intentions, and artists in the exhibition; 2021 curatorial intern Lizzie Errington discussed the narrative behind the selections in her exhibition *Unfinished Portraits*.

Because of Covid restrictions, several of the talks for our *Autonomous Bodies* exhibition had to be given on Zoom. Inter-disciplinary artist Holly Walker gave a talk about her videos and photographic work; visual artist Jo Bragg discussed what "autonomy"

looks like to themselves and those across the spectrum of Aotearoa's LGBTQIA+ arts communities; and Dr Kirsty Baker spoke about the genealogy of women only exhibitions in Aotearoa.

Among the other public programmes held this year were: a workshop on looping where wire is crocheted around natural materials, given by visual artist Birgit Moffatt; Sean Aickin of Splendid Photo Lab, conducted a smartphone photo workshop on technical aspects of Sara McIntyre's photography; a Matariki workshop was led by well-known artist Ron Te Kawa on creating an upcycled original textile artwork; and two joint workshops were held with Inverloch Art School on portraiture, collage and printmaking.

The Gallery again participated in the city-wide *Face to Face Festival* (27-30 May 2021) by hosting performances by noted musician, composer and multi-instrumentalist, Warren Maxwell.



Looping Workshop session with artist Birgit Moffatt

Special Events

Reception at Government House Auckland

Our Patron, the Governor-General, The Right Honourable Dame Patsy Reddy, generously hosted a reception for 120 guests and supporters of the Portrait Gallery at Government House in Auckland on 16 July to celebrate the Gallery's 30th anniversary. The Governor-General gave an inspiring speech about the important role of portrait galleries in engaging the heart and soul of a nation and spoke warmly of her hopes for a more financially secure and better brighter and bolder future for the New Zealand

Portrait Gallery. The Chairman, Dr Alan Bollard, spoke briefly of our plans to develop a bespoke programme of activities in Auckland, and special guest, actor Sam Neill DCNZM OBE, who was unable to attend because of the freeze on quarantine-free travel from Australia, gave a pre-recorded video message urging that the Portrait Gallery be recognised and supported as a national institution. We could not have wished for a more auspicious start to raising our profile in Auckland.



Sir Don McKinnon and Clare de Lore at Government House Auckland



James and Eve Wallace with Lady Philippa Tait



Dame Patsy Reddy



Sir Roger and Dianne Lady Hall



Dame Trelise and Jack Cooper



Mary and David Kisler

NZ Opera Benefit Concert



Baritone Phillip Rhodes' enters to begin our NZ Opera Benefit Concert.



Jane Aim, Tony and Kristin Arthur, Jocelyn Brandon



Chris and Kathy Parkin

On Friday 14 May we hosted a special benefit concert for the Portrait Gallery in close collaboration with NZ Opera to raise funds for the inaugural *Kiingi Tuheitia Portraiture Award*. The evening sold out in advance, despite several other significant events in Wellington that night, and was a huge success. Shed 11 was transformed into a glamorous concert venue where the audience of 150 opera and art lovers enjoyed arias by Rossini, Verdi,

Mozart, Bizet, Puccini, Copland and Gershwin sung by baritone Phillip Rhodes (Ngāti Awa, Ngāti Kahungunu) and soprano Katherine Winitana (Ngā Ariki Kaipūtahi, Ngāti Kahungunu). The evening concluded with an auction of 10 artworks under the gavel of guest auctioneer, Trustee Richard Thomson. The evening raised in excess of \$10,000 for the Portraiture Award and was greatly enjoyed by all who attended.

2021 Ovenden Lecture



Neil Plimmer MNZM

After several frustrating, Covid-related, postponements, the third of the annual Ovenden lectures was given by Neil Plimmer MNZM on 30 November 2021. In his richly illustrated talk entitled *Portraiture in 3D: an art form of its own*, Neil looked at the role of busts, statues, and bas-relief in the wider field of portraiture and contemporary art, and the differences between 2D and 3D portraiture. In a first for the Gallery, the lecture was livestreamed and posted on the website.

Founders Day

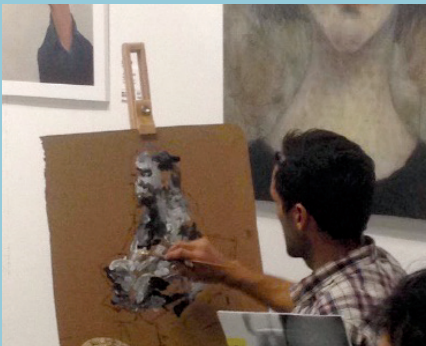
This year's Founders Day was held on Sunday 5 December and was again co-hosted by the Trustees and Friends of the Gallery. The evening was an opportunity to mark the successes of the year, most notably the inauguration of our new biennial Kiingi Tuheitia Portraiture Award, and to thank some of our most longstanding and loyal members.

Eve Wallace, who was stepping down as a Trustee after 12 years, was thanked for her invaluable service on the Board and work behind the scenes to promote the Gallery. Jane Aim, one of the founding members of the Friends in 1995, was awarded an Honorary Life membership by the Friends. The Druz'ya Quartet enlivened the celebrations with music by Bach, Mozart, Vivaldi and Spanish tangos.

Saturday Sitzings

These free monthly portraiture sessions give everyone, from the complete beginner to accomplished artists, the opportunity to draw and paint a subject in a relaxed and informal collegial setting. The Gallery provides materials and a model and refreshments while Mojo provides free coffee for participants.

Unfortunately we were only able to host seven Saturday Sitzings in 2021. The sessions from May to August had to be cancelled because the Gallery space was fully occupied by the Kiingi Tuheitia Portraiture exhibition. We are very grateful to the New Zealand Academy of Fine Arts for providing an alternative venue for the June portraiture session. In September we introduced Zoom sessions with photographs of the model. This innovation proved to be so successful that we continued with online sessions for the rest of the year.



Education Visits

Despite Covid-19, there was an encouraging increase in the number of school and educational group visits in 2021. We received some 543 students on pre-booked guided tours, most of them in the first and last quarters of the year. These included 468 primary and secondary school students almost all from schools in the Wellington region, as well as 75 students from tertiary and other educational institutions. This represents an increase of 25% over 2020.

Management

With the completion of the streamlining of the Gallery's committee structure, noted in the 2020 Annual Report, the Management Committee continues to provide regular oversight of administrative, financial and fundraising matters. Meeting monthly, it acts on behalf of the Board between its quarterly meetings. In order to strengthen communication with the Friends of the Gallery, the Friends' Committee Chair, Janet Waite, joined the Management Committee from September.

As noted by Trustee Chair, Dr Alan Bollard, Covid-19 impacted deeply on Gallery operations, events, visitors and the work of the Management Committee, which had to conduct a number of its meetings remotely. Despite this, a close working relationship was established with the Acting Director, Brian Wood, whose term covered the entire 2021 calendar year. He has agreed to curate an exhibition in mid-2022 featuring works by expatriate artist Raymond McIntyre.

With the Acting Director, the Committee oversaw the process leading to the appointment of a new Registrar/Administrator and new Audience Engagement Coordinator (Becky Bean and Holly Walker respectively) at the end of the year. It also led preliminary discussion on other staffing priorities, including a Donor Support and Development Coordinator position (much of this

work has been carried out hitherto on a voluntary basis by Denise Almao), as well as a specialist fundraiser.

This discussion was prompted by the clear realisation that while the Gallery's funding situation is barely manageable in the short term, the longer-term prospects are much more challenging and require an intensification of effort if the Gallery is to meet its objectives.

The Committee has also continued its work on options for physical improvements to the Gallery building, not only to meet the challenges of weather and climate, but also because of the constraints on office and storage space. Some modest changes have been agreed to help address these issues. These, together with some other initiatives of the Director and Acting Director to improve the Gallery's data management system and digital capability, are designed to improve the Gallery's ability to exhibit and share its work with a wider audience.

Of course, the Gallery works in collaboration with many partners (including a number mentioned in the following section on Fundraising). The Kiingi Tuheitia Portraiture Award was evidence of this, as is noted elsewhere. An evening of opera, mounted with the collaboration of NZ Opera, demonstrated the ability of two national arts organisations to work synergistically.

In keeping with the Gallery's commitments as a national institution,

the Management Committee has been working with the Trustees based in Auckland and Christchurch to develop activities in those centres. An event at Government House in Auckland in July drew both Gallery members and others from the community to view artworks there and to hear more about the Gallery's intended tours of its own exhibitions. In Christchurch, linkages are being formed with the Christchurch Art Gallery, whose Friends' group led a visit to the Portrait Gallery in October. The potential to tour Gallery exhibitions to Christchurch is also being actively pursued.

Finally, a word of thanks to Committee members, and to staff and Gallery volunteers for their help in advancing the Management Committee's agenda.

Fundraising

The past year was a volatile one for the Gallery's finances. As the Chair outlined in an interview with the Dominion Post in July, the Gallery's financial situation remains precarious, and almost entirely dependent on private donations and grants to stay afloat. It was therefore a most welcome development in October to be awarded our first-ever Annual Arts Grant by Creative New Zealand. This generous grant of \$150,000 is to fund our 2022 exhibition programme and will make a huge difference to our work in the coming year. While this development will help address immediate shortfalls, security will not be assured until such time as we receive the recognition and funding of a national institution

Welcome as the grant from Creative New Zealand is, it will not cover all exhibition costs in 2022, and of course did not remove the need to seek grants to cover the 2021 exhibition programme. Potential sponsors had to be identified and applications made for each individual exhibition. In 2021 generous grants were received from the Lion Foundation for *Kāhaki: Peter and Sara McIntyre*, the Stout Trust for *FaceTime: Portraits from the 1980s*, the Deane Endowment Trust for our Front Gallery exhibitions; and from the Office of the Kiingitanga, Bethlehem Charitable Trust, Wellington City Council, and Forsyth Barr for the inaugural *2021 Kiingi Tuheitia Portraiture Award*. Creative New Zealand also provided a grant for the catalogue for the new

award as well as the costs of touring the exhibition nationally after its Wellington run. We are also very grateful to Chris and Kathy Parkin for their sponsorship of our professional publicist, Rebecca Reed of Arriba PR, whose success in obtaining nationwide media coverage for the Kiingi Tuheitia award was outstanding.

Operational funding is always the most difficult item to secure and we are very grateful to the Wellington City Council for extending its contract grant to help with our running costs over the 12 months beginning 1 July 2021. This one-off grant provided much-needed income for the Gallery. The interest and support shown in the Gallery by Mayor Andy Foster and fellow Councillors have been particularly appreciated. We are also deeply grateful to the Freemasons Foundation, Guild Holdings Ltd, Nikau Foundation and the Aileen Drewitt Trust for their generous donations towards our costs in 2021. Their substantial gifts were very welcome in uncertain times.

We are also very thankful to Liz Stringer for funding the stipend of the 2021 Curatorial Intern, to the Wellington and NZ Community Trusts for assisting with the salaries of the Director and Audience Engagement Coordinator, and a number of private donors whose donations of \$5,000 or more provided essential underpinning for our activities.

The Government's Covid-19 Resurgence Support and Wage Subsidy payments in 2021 and

National Services Te Paerangi's Museum Hardship Fund were invaluable in helping us weather the impacts of Covid-19 and the decline in funding by some trusts and foundations facing their own steep revenue losses due to the pandemic. The Museum Hardship Fund in particular was very helpful in offsetting our dramatic loss of income from venue hire which, pre-Covid, had gone towards meeting our electricity and gas costs.

We are hugely indebted to our many art partners who have generously lent works or given of their time and resources to support our exhibitions, public programmes and education activities, including The Arts Society Wellington and Trustpower Ltd.

In thanking all those involved at the Gallery and more widely in fundraising efforts, I should also acknowledge the immense contribution of Denise Almao in this regard. As noted

“... the Creative NZ grant will make a huge difference to our work in the coming year ...”

We also thank the New Zealand Lottery Grants Board for its generous grant enabling us to commission a feasibility study of options for stabilising and enhancing the internal environment of Shed 11 for exhibitions without harming the heritage elements of the building. We are also immensely grateful to WSP, the engineering consultancy firm that conducted the study. The Trustees are reviewing the options identified but do not expect to take any action in the present financial situation.

elsewhere, the Gallery could not manage without the funds raised; and the oversight Denise provides on a voluntary basis has been critical to the success of these efforts.

We extend our warmest thanks to all our donors and supporters for their commitment and encouragement of our work over the past year. We could not have done it without you!

James Kember
Chair, Management Committee

Friends of The New Zealand Portrait Gallery

2021 was a busy year, full of new experiences and challenges for the Gallery. Friends attendance at events and their generous support continued as always and are highly valued. Our varied activities included visits to artists' studios and public collections as well as floor talks - and our own exhibition!

The demand for a second visit to the Parliamentary Art Collection Tour prompted another tour on 15 March. The group was especially pleased to see a few of Sue Skerman's beautifully painted panels of the New Zealand bush, created for the Osaka Expo and now on display at Parliament. Sue, a celebrated New Zealand artist, was a founding member of the Friends' Committee.

On 5 May a large group of Friends led by Jane Aim, enjoyed a tour to Raumati where we visited the artists Marcus Ebbett, Philip Markham and Roger Daniell and were generously hosted by Roger afterwards.

We were delighted with the response to a Friends' floor talk to hear more about the Kiingi Tuheitia Portraiture Award for emerging Māori artists. Forty Friends met at the Gallery on 8 July and enjoyed an excellent talk by Audience Engagement Coordinator, Brianah Lee. We hope to arrange more such events during 2022.

On 2 October we welcomed a visit by a group of Friends of Christchurch Art Gallery to the Gallery and look forward to returning the visit in 2022.



A group of Friends enjoyed a morning visit to Tatyana Kulida's studio in lower Cuba Street on 29 July. Tatyana is a classically trained artist who studied in Florence and is interested in portraiture. This fascinating visit ended with lunch and discussion at a nearby café.

As the year progressed, the Friends' Committee worked on curating their own exhibition, *Friends' Favourites*, spurred on by an invitation from Acting Director Brian Wood. The exhibition opened in the Front Gallery on 10 September. Each Committee member chose one or more paintings from the Gallery collection and wrote the descriptive label. The choices were varied in style and period and the exhibition proved to be popular with visitors to the Gallery. Although we were denied an opening event

“... Our varied activities included visits to artists’ studios and public collections as well as floor talks - and our own exhibition! “

because of Covid, we held a well-attended floor talk on 2 December where each Committee member spoke to their choices, ably assisted by Brianah Lee.

This year the Committee launched its long-planned Oral History project to interview half a dozen of the key founding members of the association. The National Library kindly agreed to loan recording equipment and provide training for the project. The small project group, chaired by Jennifer Button, hopes to complete the interviews in 12 months.

We value the opportunity to welcome new Friends and during the year added 72 new members, bringing total numbers to 680. The Gallery’s monthly e-newsletter, The Inside Look, and invitations to Friends’ events help keep members in touch with our activities.

The Committee is a wonderful team with experience and wisdom. I thank them for their support and guidance which made 2021 a productive and interesting year for all.

Janet Waite
President



Jane Aim is awarded an Honorary Life membership by Trustee Phillip Green.

The final event of the year was Founders Day on 5 December, jointly sponsored by the Friends and the Trustees. Many Friends attended this celebration at which Jane Aim received an Honorary Life membership of the Friends. Jane was personally asked to join the Friends in 1995 by Gallery founders Bill and Judy Williams, and has been a tireless promoter of the Gallery and a stalwart of the Friends Committee ever since.

In Memoriam

Avenal McKinnon MNZM (1949 - 2021)



Avenal McKinnon after the Portrait Gallery finally secured its permanent home in Shed 11 in 2010

It was with great sadness that we record the passing of our remarkable and much loved first Director, Avenal McKinnon in Wellington on 12 March.

Avenal became Director of the New Zealand Portrait Gallery in May 2005 at a time when the founding Trust had no physical gallery, a collection of only six artworks, no computers, and no assured funding. Until then, the Gallery was totally dependent on its dedicated founders, Friends and volunteers to present its exhibitions in a variety of temporary premises.

With a degree in English literature from the University of Canterbury and post-graduate study at the Courtauld Institute of Art in London, Avenal

was the perfect choice to lead the professionalisation of the young Gallery. Initially appointed on a part-time basis for one year, she willingly accepted the challenge of working with a supportive Board to find a permanent home for the Gallery to present a programme of high quality exhibitions and expand the collection.

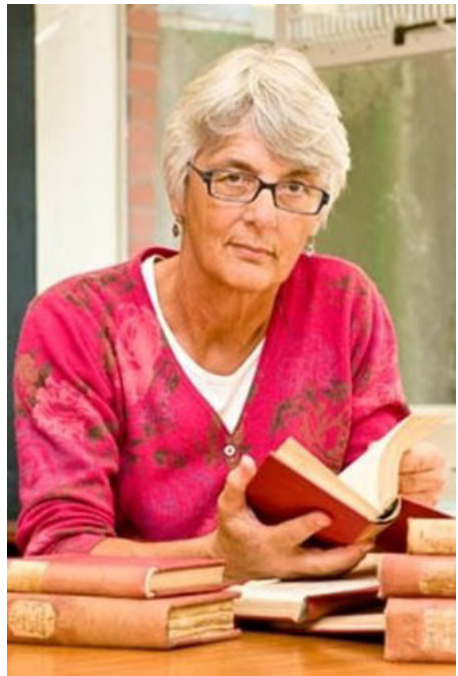
By her retirement in December 2014, Avenal had succeeded beyond expectations. In just under a decade the Portrait Gallery had established itself as a fully professional body with a permanent home in a heritage building on Wellington Waterfront, exhibitions in demand from regional galleries and museums, a collection

of over 200 works, and growing recognition and respect from the wider sector and public. Much of this was due to Avenal's tireless efforts. With her deep love for art and boundless enthusiasm, she nurtured and encouraged the careers of many artists, discovered 'lost' portraits for display or acquisition, created a programme of exciting and innovative exhibitions, and attracted and built a network of loyal supporters, private donors and institutional funders. She worked particularly closely with Denis and Verna Adam to develop and promote New Zealand's premier portraiture prize, the biennial Adam Portraiture Award, that has launched the careers of many New Zealand artists.

Avenal was a wonderfully vibrant and optimistic person who led and inspired others with her vision of bringing to life the stories of those who have shaped our nation. She is enormously missed by the whole Gallery community.

Lydia Wevers ONZM (1950 - 2021)

We were also saddened to learn of the death of Lydia Wevers on 4 September 2021. An internationally renowned literary historian and critic, teacher, writer and scholar, Lydia was a loyal supporter of the Gallery for many years. In 2013 she gave a talk on 19th century life at the Wairarapa homestead of Brancepeth in support



Lydia Wevers ONZM

of our exhibition *Te Rū Movers and Shakers: Early New Zealand Portraits by William Beetham*. Then in 2020, she gave the second of our annual Owendon lectures, entitled *House and Street*, in which she considered four different places - her house, a marae, an institution and the street - and presented some intriguing ideas and images about the geography of portraiture and the role this popular form of art plays in our lives.

Trustees and Officers of The New Zealand Portrait Gallery 2021

Patron	Her Excellency The Right Honourable Dame Patsy Reddy GNZM QSO, Governor-General of New Zealand (until 28 September 2021)
Trustee Emerita	Elizabeth Stringer
Trustees	Dr Alan Bollard (Chairman) Monique Cairns (from 27 August 2021) Michael Curtis Dr David Galler Phillip Green Marianne Hargreaves (from 6 December 2021) Helen Kedgley Diane Morcom CNZM, CVO Garry Nicholas Donna Nicolof (until 27 August 2021) Richard Thomson Eve Wallace (until 6 December 2021)
Honorary Treasurer	Michael Curtis
Management Committee	James Kember (Chair) Wellington-based Trustees Denise Almao Heather Ann Moodie
Director	Director Jaenine Parkinson MA (Auckland) (on parental leave in 2021)
Acting Director	Brian Wood (from 7 December 2020 to 5 January 2022)
Registrar and Administrator	Talei Langley BA (Hons) (VUW) (until 17 November 2021) Becky Bean BA Hons (ANU), Master of Art Administration (UNSW) (from 13 December 2021)
Audience Engagement Coordinator	Brianah Lee BA (Hons) (VUW) (until 16 December 2021) Holly Walker MA (Hons) (Massey) (from 13 December 2021)
Graphic Designer	Jess O'Brien

**Communications
Assistant for Kiingi
Tuheitia Portraiture
Award**

Mike Tiller, Tia Nepia-Su'a

Gallery Supervisors

Sambrene Chandler, Amber Holdem, Paul Johnston,
Brooke Pou, Maya Neupane, Louie Zalk-Neale

**Management
Committee**

James Kember
(Chair)
Denise Almao
Dr Alan Bollard
Mike Curtis
Phillip Green
Helen Kedgley
Heather Ann
Moodie
Diane Morcom
Brian Wood

**Programme and
Acquisitions
Committee**

Brian Wood
(Chair)
Mark Crookston
Helen Kedgley
Dr Vincent
O'Malley
Dr Keith Ovenden
Dr Rebecca Rice
Julia Waite
Matariki Williams

**Friends
Committee**

Diana Morrison
(President
Emerita)
Janet Waite
(President)
Jane Aim
Denise Almao
Jennifer Button
Joy Dunsheath
Jane Kirkcaldie
Sue Upton
Carla Wild
Shona Willis

Gallery Volunteers

Di Berry
Louisa Chase
Rosemary Cole
Shona De Sain
Elizabeth Ellis
Kendall Gibson
Brianna Gillanders
James Graves
Amber Holdem
Jane Kirkcaldie
Paul Johnston
Cr Paul Lambert
Sophia Faber
Bridget Mahy
Frankie Millar
Kath
O'Shaugnessy
Isla Turner-Holmes
Margaret Walls
Jane Wright

**Liz Stringer
Curatorial Intern**

Lizzie Errington

**VUW Museum
and Heritage
Studies Intern**

Susanna Bauer

Gallery Finances

Summary financial statements are set out below. These were prepared following the conduct of a review engagement as required under the Charities Act 2005. The full 2021 financial statements and results of the review conducted by PJ Major Chartered Accountant are available on the NZ Portrait Gallery's website and the Department of Internal Affairs Charities Services website.

THE NEW ZEALAND PORTRAIT GALLERY TRUST STATEMENT OF FINANCIAL PERFORMANCE For the year ended 31 December 2021

	Notes	2021	2020
		\$	\$
Revenue			
Donations, fundraising and other similar revenue	5	775,166	405,528*
Fees, subscriptions and other revenue from members		10,623	8,547*
Revenue from providing goods or services		70,731	49,792*
Interest, dividends and other investment revenue		2,135	3,336
Other Revenue (i.e. Covid-19 wages subsidy and resurgence payment)		31,550	114,416
Total Revenue		890,205	581,619
Expenses			
Expenses related to public fundraising		29,381	6,185
Volunteer and employee related costs	4	237,888	220,104
Costs related to providing goods and services	1	468,979	384,425
Other expenses		12,663	34,433
Total Expenses		748,912	645,147
Surplus/(Deficit) for the year		141,293	(63,528)

This statement should be read in conjunction with the Review Engagement in the full financial statements.

* By agreement with this year's auditors, the coding of several revenue and expense items were adjusted to reflect the requirements of Charities Services. The total amounts for revenue and expenses in 2020 were not affected.

STATEMENT OF FINANCIAL POSITION

As at 31 December 2021

	Notes	2021	2020
		\$	\$
ASSETS			
Current Assets			
Bank accounts		157,192	82,513
Debtors and prepayments	3	7,707	77,478
Interest receivable		1,614	641
Inventory	3	9,465	8,997
GST		-	7,505
Shed 11 Prepaid Rent (current portion)	1	58,000	-
Total Current Assets		233,978	177,135
Non-Current Assets			
Property, Plant and Equipment	3	200,869	208,973
Shed 11, Prepaid Rent	1	725,000	841,000
Investments			
Term Deposits	2	504,888	155,669
Total Investments		504,888	155,669
Total Non-Current Assets		1,430,757	1,205,642
Total Assets		1,664,735	1,382,777
LIABILITIES			
Current Liabilities			
Accounts Payable		8,550	24,496
Employee Entitlements		(648)	17,741
GST		5,637	-
Grants Received in Advance		199,007	28,483
Other Current Liabilities		1,811	2,973
Total Current Liabilities		214,358	73,693
Total Liabilities			
Total Assets less Total Liabilities (Net Assets)		1,450,377	1,309,084
Accumulated Funds			
Equity/members funds		1,152,959	1,216,487
Current year earnings		141,293	(63,528)
Reserves	2	156,125	156,125
Total Accumulated Funds		1,450,377	1,309,084

STATEMENT OF FINANCIAL POSITION

As at 31 December 2020

Notes:

1. The Trust's total accumulated funds of \$1,450,377 mostly consist of the prepaid gallery rental of \$725,000 which accounting rules require to be allocated over the period of the lease. The annual rental allocation of \$58,000 for 2021 is included in the Statement of Financial Performance under current assets.
2. The Trust's reserves include \$100,000 allocated by the Trustees to a Leasehold Renewal Fund to provide for a new lease on the expiration of the current 25-year lease, as well as a recent bequest.
3. An insurance valuation of the collection was made in December 2016. A 40% portion of the total valuation has been taken up in the Trust's accounts.
4. The Trust is dependent on the voluntary services of many supporters of the Gallery, the value of which is not recognised in the financial statements.
5. This year's revenue included two substantial private donations.

Gallery Benefactors 2021

Masters Circle

Denise Almao
Suzanne Blumhardt
Dr Alan Bollard and
Jenny Morel
Estate of Avenal
McKinnon
Kate Fortune *
Sir Michael and
Lady Hardie Boys
Dr Keith Ovenden
Elizabeth Stringer and
Rob Morrison
Janet Waite

Canvas Circle

Anonymous (2)
Sara Acland *
Gael Black
Yvonne and Peter Cottier
Barbara and Don Crump
Tony and Diana Doogue
Diana Duff Staniland *
Beverley Eriksen *
Hugh Fletcher *
Hon Laurie Grieg *
Sir Roger Hall *
Mark Reese and
Joanne Hansen *
RH Hansen
Brian and Sally Hassell *
Prof. LC Holborow
Jane and Andrew Hyder
Jane and Denis Kirkcaldie
Jocelyn Afford and
Stephen Kos
Dr David Langley
Alexander McKinnon
Diane Morcom *
Peter Scholes
David Shand *
Anna Shires
Marie and Gordon Shroff
Ross Steele
Alison Stokes
Supertonic Choir
Tainui Group Holdings Ltd
John and Sue Upton*
Ken Wiggins
Loretta and William Wong
Kirsty Wood
Jane Wright*
Annabel Young

Graphite Circle

Jane Aim
Kristin and Tony Arthur
Beverley Shore Bennett
Rosemary Bradford
Jocelyn Brandon*
Don Brash
Jennifer Button
Jenny Buxton
John Davidson and
Brigitte Schuette
Frances Davies
Brian and Linda Dawkins
Paul Deans
Sarah Dennis
Elizabeth Ellis
Peter Fabian
Keith and Helen Ferguson
Stephen and Cathy Franks
David and Jan Fullarton*
Jonathan Gooderham
Janet Grieve
David Kember
Rob and Colleen Laking
Brenda Boughen and
Peter Leslie
Ann Mallinson
Heather Ann Moodie *
Simon and Pip Murdoch
John Nankervis
Richard Nelson *
Thera Nelson
Jim Norris
Diana Pope
Ruth and Julian Proctor
Jill and Tony Robinson
Meryl Scott
Suzanne Snively and
Ian Fraser
Annie Fleetwood and
Ross Tanner
Edith Tripp
Dr Ann Weston
John and Carla Wild

Corporate Sponsors, Trusts and Foundations

Principal Partners

Adam Foundation



Chris and
Kathy Parkin

Absolutely Positively
Wellington City Council
Me Heke Ki Pōneke



Te Tari o Te Kiingitanga
The Office of the Kiingitanga

Major Partners



ARTS COUNCIL OF NEW ZEALAND TOI AOTEAROA



supporting community initiatives



NZ COMMUNITY TRUST



National Library of New Zealand
Te Puna Mātauranga o Aotearoa



NIKAU FOUNDATION



Lottery Environment and
Heritage Fund

Aileen Drewitt Trust

Te Tarahati Ohaoha o Bethlehem
Bethlehem Charitable Trust

The Gerrard and Marti
Friedlander Trust

Deane Endowment Trust

Te Tarahati Marae o Turangawaewae
Turangawaewae Marae Trust

Friends of the
New Zealand Portrait Gallery

Guild Holdings Ltd

Programme Partners

Adam Art Gallery
Te Pātaka Toi

Dunedin Public Art Gallery

Toi Māori Aotearoa

University of Auckland
Art Collection

Victoria University of
Wellington Art Collection +
Classics Museum

NZ On Screen
Iwi Whitiāhua

Anna Miles Gallery

BNZ

Auckland Art Gallery
Toi o Tāmaki

Museum of New Zealand
Te Papa Tongarewa

The Dowse Art Museum

Wallace Arts Trust

Te Puni Kokiri

Auckland War
Memorial Museum
Tāmaki Paenga Hira

Arriba PR

WSP

Mojo

Christchurch Art Gallery
Te Puna o Waiwhetū

Pataka Art + Museum

Fletcher Trust Collection

Sarjeant Gallery Te Whare o Rehua

Tim Melville Gallery

Page Galleries

Quartz Museum of Studio Ceramics

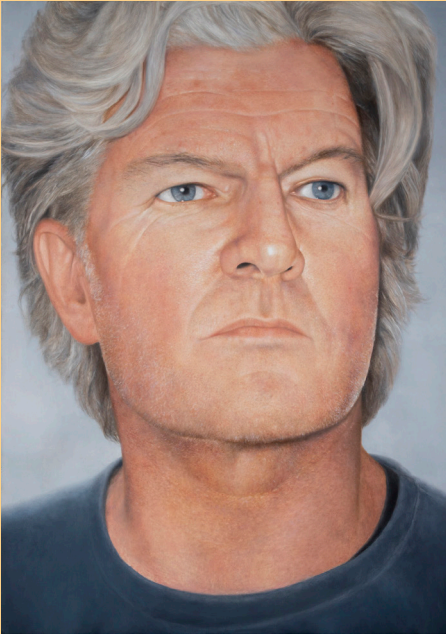
NZMA Floristry Students 2021

Graphic Solutions Ltd

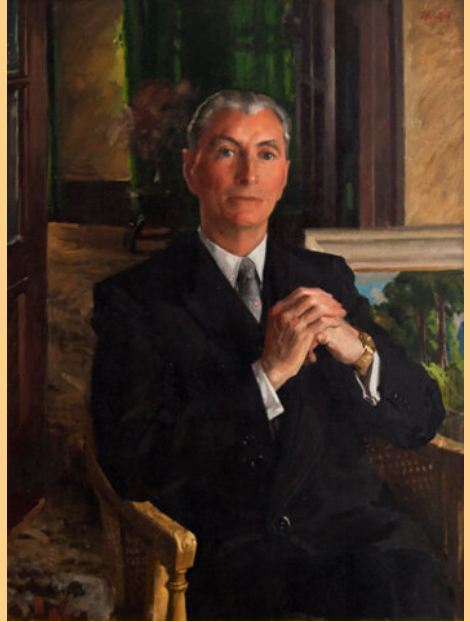
SHARP

TerraVin Wines

Portrait Acquisitions



Martin Ball *Tim Finn* 2006. Oil on canvas.
Gift of Ross Trevor and Beverley Anne Christoffersen.



Sir William Dargie *Sir Henry Kelliher seated in the Long Room, Puketutu Island homestead* 1974. Oil on canvas.
Gift of the Kelliher Art Trust.

The Programme and Acquisitions Committee again provided invaluable advice to the Acting Director on managing the Gallery's permanent collection on issues ranging from expert evaluation of artworks for possible acquisition to comments and suggestions on the exhibitions programme. Following discussion with the owners, all the artworks on long-term loan to the Gallery were returned to their owners during 2021 as our storage facilities are very limited and now at capacity.

During 2021, the Gallery acquired the above two portraits for the permanent collection.



Image: Andy Spain