

New Zealand Portrait Gallery
Te Pūkenga Whakaata

Annual Report 2020



Chair's Introduction

On behalf of the Trustees and Management Board of the New Zealand Portrait Gallery Te Pūkenga Whakaata, it is my pleasure to present our Annual Report for 2020.



Anne Bollard *Alan Bollard in earlier days* 2011.
Oil on canvas. Adam Portraiture finalist 2012.
Private collection.

This has been a year of unprecedented challenge for the Gallery.

It began with great flourish and promise - visitor numbers were running 13.7% ahead of 2019 - until the first Covid-19 case was reported in New Zealand on 28 February. Two weeks later the Gallery had to close for eight weeks and the exhibition schedule and public programmes were upended. Thanks to the wage

subsidy all staff were retained and worked from home rolling out a new website and improving our online resources. This ultimately enabled us to re-open and re-start our programmes quickly, with minimal change, when the country returned to Level 2, thanks to the patience and flexibility of our artists, curators and suppliers.

I am pleased to report that, despite Covid, the Gallery presented eight highly successful exhibitions in 2020. All were of outstanding quality and aesthetically and intellectually stimulating - from the Adam Portraiture Award showcasing the diversity of New Zealand's creative talent, to Marti Friedlander's stunning portraits chronicling the changing face of the arts in New Zealand in the 60s and 70s, to Star Gossage's spiritual figures reflecting the interconnectedness of humanity and the land, to the political use of portraiture as an instrument of power. They each helped expand our understanding of ourselves as New Zealanders, our identities and stories. We are very grateful to the artists and curators involved in bringing these remarkable exhibitions to the Gallery, and to the many public galleries and private collectors who have generously loaned works for our exhibitions.

We are also very grateful to our sponsors for their backing of this year's exhibition programme, particularly the Adam Foundation,

the Gerrard and Marti Friedlander Charitable Trust, and the Stout Trust. Special thanks must also be given to the Freemasons Foundation, Guild Holdings Ltd, the Deane Endowment Trust, the Margaret Doucas Trust, Liz Stringer, and Chris and Kathy Parkin for their generous grants which have been a critical underpinning of our operations.

This year also saw the groundwork laid for an exciting new initiative in 2021 – the *Kiingi Tuheitia Portraiture Award*. This new portraiture award is aimed at inspiring emerging Māori

thanks go to all our loyal Friends and supporters who supported us in this difficult year and enabled us to end 2020 in fair shape. But the financial outlook for 2021 and beyond remains challenging. The Board will continue to explore every avenue to secure the Gallery's long-term sustainable future.

This year the Friends Committee farewellled Diana Morrison who retired after more than 30 years as a founding member and Friend of the Portrait Gallery and nine years as President of the Friends. She goes with our warmest thanks for her many years of

“... the next 30 years will see the Gallery secure its position and thrive as one of our key national institutions ...”

artists to create portraits of their tūpuna (ancestors).

Unfortunately Covid also affected the ability of some sponsors and donors to assist us. Many of the trusts and foundations that have generously supported our exhibitions and projects in the past were suddenly hit with declining revenues. In October, faced with the suspension of many of these funds, we launched a special appeal to our friends and supporters inviting them to consider committing to a multi-year donation while the Board explored new funding sources. The response was extremely gratifying – almost 50 friends came to our aid with contributions. The Board's grateful

unstinting generous service and best wishes for the future.

I also wish to thank my colleagues on the Board, the Director and her team, and the many volunteers and supporters with whom I have been privileged to work over the past year for their support, commitment and hard work in delivering the year's successful programme despite the tribulations of Covid-19 and the problems of operating in an aging heritage building on a tight budget. We would not be where we are today without you.

I extend the best wishes of all of us to Director Jaenine Parkinson who will be

taking a year's parental leave in 2021, and a warm welcome to Brian Wood who has been appointed Acting Director during her absence.

This year the Gallery celebrated its 30th anniversary together with the Friends who commemorated their 25th anniversary. I am confident that, with your help, the next 30 years will see the Gallery secure its position and thrive as one of our key national institutions, telling the stories of New Zealanders through the art of portraiture.

Although this report covers the year 2020, it would be remiss of me not

to foreshadow some of the major events that have characterised 2021 and will be discussed in more detail in that report - the launch of the inaugural Kiingi Tuheitia Portraiture Award, and the passing of two extraordinary women - the incomparable Avenal McKinnon, our first professional Director from 2005 to 2014, who led the professionalisation of the Gallery, and Lydia Wevers who, despite ill health, was one of our most eloquent and unstinting supporters.

Dr Alan Bollard
Chairman

Exhibitions

The Gallery's exhibitions programme in 2020 was significantly impacted by Covid-19. The Gallery had to close for eight weeks, one exhibition was postponed to 2021, and annual visitor numbers fell by 28% to 28,159 following the closure of the borders, and loss of overseas tourists. The Gallery is proud that it was able to present all but one of its planned exhibitions in these difficult circumstances. The eight exhibitions shown were also exceptional for their innovativeness and quality and enhanced the Gallery's growing national reputation.



Last year the Board reviewed its Exhibitions and Collections Policies to clarify the Trustees' governance role in these areas. As a result, the Programme and Acquisitions Committee was re-configured with a new role and criteria from 2020. The Gallery warmly thanks outgoing Committee members

Dr Pamela Gerrish Nunn, Christopher Johnstone, Joan McCracken and Richard Wolfe for their invaluable professional advice and support over the years, including publicly endorsing the activities of the Gallery, advising on collection decisions and giving specialist talks.

Being Chinese in Aotearoa: A Photographic Journey

21 November 2019 to 10 February 2020)



Race Relations Commissioner, Meng Foon, opens the exhibition *Being Chinese in Aotearoa*.

This exhibition of many rarely seen photographs celebrated the 175-year story of Chinese New Zealanders. Beginning with the first settler, Appo Hocton who arrived in 1842, the exhibition recorded the struggles of the early migrants in photographs that are both historically important as well as artistic, and documented the significant contribution that they and their descendants have made to New Zealand society and economy.

The exhibition also featured a new artwork by Wellington-based artist Kerry Ann Lee commemorating her parents' restaurants in Wellington, specially commissioned for the exhibition. This exhibition was developed by Dr Phoebe Li, John B. Turner and Auckland Museum and made possible by support from the Asia New Zealand Foundation, Chinese Poll Tax Heritage Trust, Creative New Zealand, Massey University, and Chris and Kathy Parkin.

2020 Adam Portraiture Award

27 February - 9 August 2020

This exhibition presented the works of the 50 finalists in the 2020 Adam Portraiture Award. These were selected from a record field of 373 entries from throughout NZ. For the first time, these were all lodged online through our website. Also for the first time, the competition had two judges, one from overseas and one from New Zealand. They were Karen Quinlan, Director of the National Portrait Gallery of Australia and Lynda Tyler, Convenor of Museums and Cultural Heritage, University of Auckland. The first prize of \$20,000 was awarded to Sacha Lees of Lower Hutt for *Sometimes an outline coloured in*. The runner-up and winner of the \$2,500 second prize was Vivienne Still of Foxton for her work *Engage*. The judges also awarded five highly commended citations to Marcus Ebbett for *Marcus*, Stephen Lawrie for *Friday after work with Emma*, Duncan Pepe Long for *David*, Lisa Munnelly for *Stephen*, and Todd Simpson for *Screwed Up—A Self-Portrait*. The exhibition was made possible by a generous grant from the Adam Foundation for the prizes and a donation from Chris and Kathy Parkin. The People's Choice award was won by Gwynn Hughes for *Stig and the taniwha*.

This exhibition was originally scheduled to end on 22 May but was extended for an additional 11 weeks to compensate for the closure of the Gallery for eight weeks during the Covid-19 lockdown.



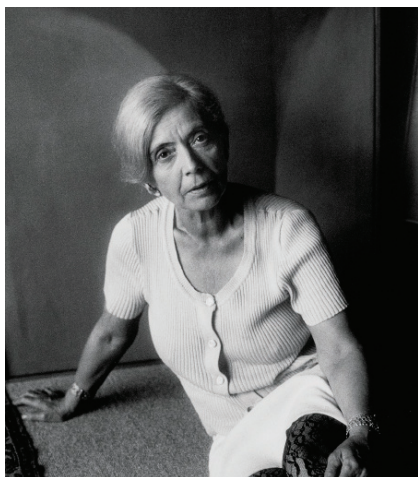
Sacha Lees with her winning portrait, *Sometimes an outline coloured in*.



Adam Award judges, Karen Quinlan and Lynda Tyler.

Marti Friedlander: Portraits of the Artists

27 August to 8 November 2020



Marti Friedlander *Louise Henderson*



Marti Friedlander *Toss Woolaston*

This exhibition, curated by distinguished author and art historian Associate Professor Leonard Bell, presented over 80 compelling photographs by Marti Friedlander of both well-known and now ‘forgotten’ or little-known artists, writers, craftspeople and actors who were prominent in expanding and vitalising cultural life in New Zealand in the 1960s and 1970s. A number of the images had never previously been seen publicly. The exhibition also featured the launch of Leonard Bell’s book with the same title. The exhibition was generously sponsored by the Gerrard and Marti Friedlander Charitable Trust with a donation from Chris and Kathy Parkin.

This exhibition was originally due to be opened by Dame Robin White DNZM, accompanied by the launch of Dr Bell’s book. However, the continually changing Covid-19 alert

levels meant that many of the invited guests from Auckland could not travel to Wellington and arrangements for the opening were revised almost daily. Finally, when Covid levels permitted, we were able to hold a socially-distanced book-signing limited to 10 people at a time, on 3 September. We are hugely indebted to Dr Leonard Bell for his courtesy and patience in adapting to these difficult circumstances.



Image: David Langley. Author and curator Len Bell prepares for his book-signing.

Star Gossage: He Tangata The People

26 November 2020- 14 February 2021



Star Gossage *Marae* 2013. Oil on board.
Wallace Arts Collection



Star Gossage *Rangi Marie (Peace)* 2004.
Oil on board. Private collection

This exhibition of portraits by Star Gossage (Ngati Wai, Ngati Ruanui) was curated by Grant Hall and Jaenine Parkinson. The paintings arise from the artist's personal truth in portraying the interconnectedness of wahine (woman) and whenua (land). In her wāhine-centred world, the identity of people is shown as inseparable from wairua (spirit), whenua (land), whakapapa (ancestry) and whanau (family). This exhibition brought together 20 years of the artist's practice where portrait and figure are used to communicate themes of unity, grief, compassion and aroha. The Gallery is very grateful to the Stout Trust for its sponsorship of this exhibition and to Chris and Kathy Parkin for supporting the publicity programme.



Star Gossage with *Pah paintings 1-4* (2014-2015)

New Zealand Portrait Gallery Exhibitions Touring New Zealand in 2020

Jacqueline Fahey's Suburbanites

**13 November 2019 -
16 February 2020**

Pah Homestead, Auckland

**26 September 2020 -
24 January 2021**

Waikato Museum, Te Whare o
Taonga o Waikato, Hamilton

2020 Adam Portraiture Award

21 August - 13 September 2020

Percy Thomson Gallery, Stratford

30 October - 6 December 2020

Pah Homestead, Auckland

**19 December 2020 -
31 January 2021**

Millennium Art Gallery, Blenheim

*Working Life: Photographs
by Peter James Quinn*

Waikato University

**21 September -
30 November 2020**



Jacqueline Fahey at opening of her *Suburbanites* exhibition at the Pah Homestead.



Exhibition of Jacqueline Fahey's *Suburbanites* at the Pah Homestead

The Front Gallery

The Front Gallery is an intimate space for exhibitions featuring works from the New Zealand Portrait Gallery's own permanent collection. In 2020 the exhibition programme was as follows.



Two works: Hemi MacGregor *I Am No. One, You Are No. One*; and Gina Matchitt *He Tangata toa ki te Waiata (The Great Singer)*.
Collection: Dowse Art Museum

Not Just My Face!

19 December 2019 - 15 March 2020

This exhibition curated by 2019 Liz Stringer Curatorial Intern, Georgie Keyse, presented a selection of portraits that use unconventional approaches to explore alternative ways of communicating diverse identities through portraits. It was inspired by Frances Hodgkins' famous *Still Life: self-portrait* (1935) which used an abstract arrangement of her possessions to convey the artist's personality and interests.



Bill Sutton *Unknown man* 1948
Oil on canvas.
Collection: NZ Portrait Gallery

Bill Sutton: A Good Idea

20 March -10 September 2020

Bill Sutton is today mostly known and admired for his renditions of the Canterbury landscape but he also attained a reputation as an outstanding portraitist during his lifetime. This exhibition presented a selection of his portraits. It also featured letters to one of the founders of the Portrait Gallery, Judy Williams, in which Sutton supported her idea of establishing a New Zealand national portrait gallery.



Lisa Reihana *Māori Chief (In Pursuit of Venus)* 2016
Pigment print on paper. Courtesy of Lisa Reihana
and Milford Galleries, Dunedin.

**Everything Old is New Again:
The Turnbull Library at 100**

17 September - 13 December 2020

This exhibition was curated by Dr Fiona Oliver, Alexander Turnbull Library Curator of New Zealand and Pacific publications and Paul Johnston, our 2020 Liz Stringer Curatorial Intern. It demonstrated the contemporary relevance of the Library's collection by placing selections from its heritage collections alongside recent artworks - including newly commissioned pieces - inspired by them. The show illustrated how the documents of Aotearoa New Zealand's past not only tell us stories about ourselves but also inspire new ones.



Liz Maw *Elizabeth* 1999. Oil on board.
Private collection.

Portraits of Power/Portraits as Power

17 December 2020 - 14 March 2021

This exhibition was curated by the 2020 Liz Stringer Curatorial Intern, Paul Johnston. It examined how portraits can be used as tools of state and institutional power - as well as in ways that undermine or subvert systems of power.

Public Programmes

The Gallery's Public Programmes were significantly affected by the Covid-19 restrictions. The Gallery had to close for eight weeks during lockdown, one exhibition was postponed to 2021, and many public events had to be cancelled, re-scheduled or down-sized. The overall effect was a halving of activities by comparison with 2019. While we had almost no international visitors once the borders closed, our domestic visitor numbers began to bounce back after August and had almost fully recovered by the end of 2020. This demonstrated the continuing appeal of the range of intellectual, aesthetic and sensory experiences we provide to increase visitors' appreciation of our exhibitions. There was also a number of informal attractions for children including drawing and scavenger hunts.

21
EVENTS

658+
Participants

9 **Artists &**
Topics

433 **Students**

Artist and Curator Talks

Some nine talks were given by artists, curators and subject specialists on the 2020 exhibition programme. Karen Quinlan and Linda Tyler, judges of the 2020 Adam Portraiture Award, spoke about their selection of the winning and highly commended portraits; Adam Award finalists Jana Branca and Stephen Lawrie gave talks on their artworks and practices; well-known author Len Bell and art historian Professor Dan Brown discussed the life and work of Marti Friedlander; Dr Fiona Oliver, Curator of NZ and Pacific publications at the Alexander Turnbull Library shared her insights on the works in the exhibition *Everything Old is New Again: The Turnbull Library at 100*; co-curators Grant Hall and Director Jaenine Parkinson discussed the vision of artist Star Gossage whose portraits and figures communicate themes of unity, grief, compassion

and aroha; our 2019 and 2020 Curatorial Interns Georgie Keyse and Paul Johnston each gave talks on the exhibitions they had curated - *Not Just My Face!* and *Portraits of Power / Portraits as Power*.



Paul Johnston, Dr Fiona Oliver and Jaenine Parkinson at opening of *Everything Old is New Again: The Turnbull Library at 100*.

Image: Mark Beatty, National Library



Len Bell and Professor Dan Brown in conversation about the Marti Friedlander exhibition

Special Events

During the exhibition *Being Chinese in Aotearoa: a photographic journey* (21 November 2019 - 16 February 2020) the Gallery marked the Year of the Rat in the Chinese New Year with two special events: a screening of *Cast Out* a short documentary film by Matilda Boese-Wong about a Newtown man, Kim Lee, who was exiled to Mokopuna Island in Wellington/Pōneke harbour in 1903; and two children's Scavenger Hunts.

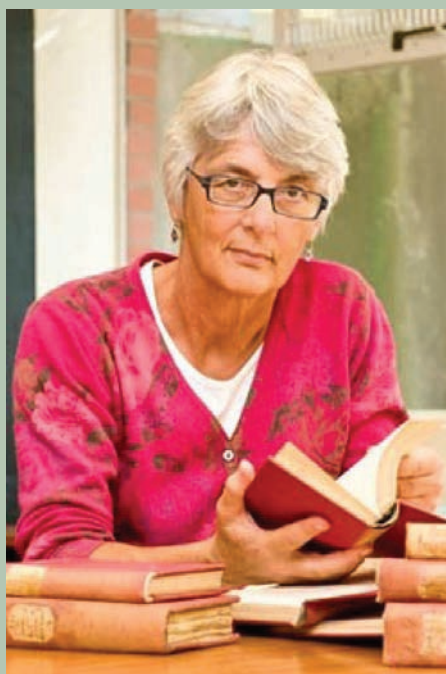
In March 2020 the Portrait Gallery unveiled its first online exhibition tour on its website. This virtual tour of the exhibition *Bill Sutton: A Good Idea* curated by Maria Brown, was developed at short notice when the Gallery was about to close on 21 March for the Level 4 lockdown.



Maria Brown delivers the Portrait Gallery's online tour of *Bill Sutton: A Good Idea*.

2020 Ovenden Lecture

The second of the annual Ovenden lectures, entitled *House and Street*, was given by the distinguished writer and academic, Lydia Wevers ONZM on 1 October 2020. The lecture considered four different places- her house, a marae, an institution and the street - and presented some intriguing ideas and images about the geography of portraiture and the role this most popular form of art plays in our lives.



Lydia Wevers ONZM

Founders Day



Presentation to Diana Morrison at Founders Day



Moderator Councillor Nicola Young with panellists Jane Aim, Dr Keith Ovenden and Jaenine Parkinson

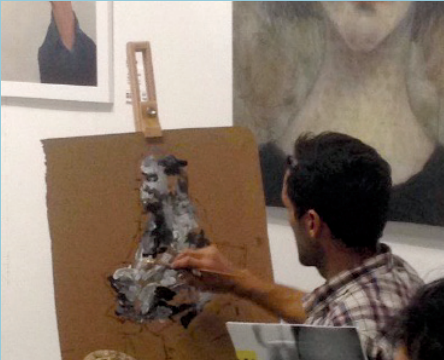
This year Founders Day was held on Sunday 6 December and co-hosted by the Trustees and the Friends of the Portrait Gallery. The occasion was used to mark the 30th anniversary of the founding of the Gallery in 1990 and the 25th anniversary of the Friends' establishment in 1995.

We were delighted to welcome Dr Bridget Williams, daughter of founders Judy and Bill Williams to the celebrations. Councillor Nicola Young chaired a panel discussion of the highlights of the Gallery's development and a preview of plans for the future. Jane Aim spoke

about the Gallery's early days and the dedication and commitment of founders Judy and Bill Williams and their band of volunteers; former Chairman Dr Keith Ovenden spoke of how the Gallery transformed itself from an enthusiastic volunteer operation into a respected professional organization from about 2006; and Director Jaenine Parkinson spoke of the Gallery's vision for the future. Diana Morrison was appointed President Emerita and awarded a certificate of Honorary Life Membership for her many years of outstanding service to the Friends.

Saturday Sitzings

Because of the Covid-19 lockdown, we were only able to host eight Saturday Sitzings in 2020. These free monthly portraiture sessions gave everyone, from the complete beginner to accomplished artists, the opportunity to draw and paint a subject in a relaxed and informal collegial setting. Materials, a model, and refreshments were provided by the Gallery while Mojo provided free coffee for participants.



Education Visits

The Covid-19 restrictions severely impacted the number of school and group visits this year. We received some 433 students on pre-booked guided tours, most of them in the first and last quarters of the year. These included 347 primary and secondary school students from schools throughout the Wellington region as well as 86 students from tertiary and other educational institutions. This represents a drop of about one-third in comparison to 2019.



School group at Marti Friedlander exhibition

Management

This year the Board continued to streamline its arrangements for overseeing the Gallery's management and administration. In August the Development Committee, which focused on fundraising, was merged into the Management Committee. With this change the Gallery now has only two committees: Management; and Programme and Acquisitions, as well, of course, as the Friends Committee. The new structure has brought fundraising directly into the Management Committee agenda, eliminated duplication and is working well. Thanks go to all those who served on the Development Committee, especially where this brought to a close their immediate contributions to Gallery management.

The role of the Management Committee, which meets monthly, is to facilitate and coordinate the work of the Board between its quarterly meetings, support the Director as required in administrative, financial or other areas and provide a forum for preliminary discussion of policy and other matters.

The most significant issue of 2020 was managing the impact of Covid-19 on our operations. The Gallery had to close for eight weeks (21 March - 17 May) under Level 4, our exhibitions and public programmes were drastically curtailed, and income from sources such as shop sales and venue hire dried up. Thanks to the wage



Gallery Supervisor Maya Neupane at Front Desk during Alert Level 2

subsidy, we were able to retain all our staff, who worked from home during the lockdown period. The Director and staff turned this crisis into an opportunity to upgrade our systems and improve and expand our digital presence. They also developed and rolled out a new website, undertook research on the permanent collection, curated online exhibitions, ran social media campaigns such as virtual visits to Artists' Studios and collection quizzes, and organised online voting for the People's Choice in the 2020 Adam Portraiture Award. This has been to the Gallery's great benefit in promoting its work.

Not long after resuming normal operations at Level 2, the Gallery suffered a second major crisis: an electrical outage caused by an incorrectly installed generator. The resulting power surge destroyed most of our electrical equipment including our newly-purchased special spot and other lighting in the Main Gallery, our computers and telephone system. An insurance claim was lodged, and final settlement is expected in 2021. Once again the Director and staff



Repainting the Gallery during an exhibition change-over

showed exemplary initiative in getting the Gallery up and running until new lights, computers and a telephone system could be installed.

In 2020 the Galley submitted a successful application to the Lottery and Environment Heritage Fund to conduct a feasibility study of the options for stabilising the internal environment of Shed 11, the Gallery's heritage premises on Wellington waterfront. The study is expected to be completed in 2021.

During the year we were sorry to farewell our creative Audience

Engagement Coordinator, Melissa McNulty, who helped establish the Gallery shop as a visitor attraction.

The Director and her staff coped admirably with the disruptions caused by the coronavirus and electrical outage. The Board of Trustees is extremely grateful to all staff - both permanent and casual - and all our volunteers for their contributions in getting us through this unprecedented period and helping to make the Gallery a respected and important part of New Zealand's heritage and cultural community.

Fundraising

Prior to Covid-19 the Gallery was on track to record an exciting and productive year in 2020 - visitor numbers were running 13.7% ahead of the same period in 2019. The pandemic abruptly changed all that. Many of the trusts and foundations that had generously supported our exhibitions in the past suspended their funding rounds in the face of declining revenues, and the Board was forced to tighten expenditure while proceeding with all but one of our planned exhibitions.

We are very grateful to the Wellington City Council for maintaining its annual contract funding grant of \$22,000 to help with operational costs. As a multi-year grant, it provides much-needed income security for the Gallery. The interest and support shown in the Gallery by Mayor Andy Foster and fellow Councillors has been particularly appreciated. We are also deeply grateful to the Freemasons Foundation, Guild Holdings Ltd, the Deane Endowment Trust, the Margaret Doucas Trust and to Chris and Kathy Parkin for their generous donations towards our operational expenses in 2020. Their substantial gifts were very welcome in uncertain times. We are particularly grateful for the Parkins' sponsorship of professional publicist, Rebecca Reed of Arriba PR, whose services have been invaluable in raising our profile and promoting our activities.

We are also very thankful to Liz Stringer for funding the stipend of the 2020 Curatorial Intern, to the



Bridget Mahy and Mike Tiller model their Gallery Host T-shirts

NZ Community Trust for assisting with the salary of the Director, to the Aileen Drewitt Charitable Trust, the Jack Jeffs Charitable Trust, and a number of private donors whose donations of \$5,000 or more have provided essential underpinning for our activities.

Each year the Gallery must seek grants to cover the costs of its exhibition programme. Potential sponsors must be identified and applications made for each individual show. Positive results are never taken for granted. In 2020 generous grants were received from: the Adam Foundation for the *2020 Adam Portraiture Award*; the Gerrard and Marti Friedlander Charitable Trust for *Marti's Portraits of the Artists*; the Stout Trust for Star Gossage's exhibition *He Tangata The People*; the Deane Endowment Trust for our Front Gallery exhibitions and new seating for the Main Gallery; and Victoria Daniel for sponsoring a selection of Lily Emo's portraits from her virtual series of essential workers during Covid-19.

This year also saw the call for entries for the inaugural *2021 Kiingi Tuheitia Portraiture Award*. Generous grants were received from the Office of the Kiingitanga, Bethlehem Charitable Trust, the Turangawaewae Marae and Creative New Zealand to launch and promote this exciting new initiative.

We are indebted to our many art partners who have generously lent works or given of their time and resources to support our exhibitions,

We are especially grateful to those who arranged regular salary deductions or monthly payments in response to the appeal. Thanks to the generosity of these individual donors the Gallery ended the year in a more secure position than expected.

Each year the Gallery receives 4% of its budget from government and must raise funds to cover the remaining 96% of its costs. We depend heavily on donations from private donors and

“... the Parkins’ sponsorship of professional publicist, Rebecca Reed of Arriba PR, has been invaluable ...”

public programmes and education activities, including National Services Te Paerangi, The Arts Society Wellington and Trustpower Ltd.

In October, faced with the ending of several multi-year grants and the risk of diminishing income, the Chairman invited our individual friends and supporters to consider committing to a multi-year donation at whatever level they could, while the Board explored new funding sources to help secure the Gallery’s position. The response was extremely encouraging - almost 50 friends came to our aid as Star Supporters by pledging contributions.

grants from trusts and foundations to continue to operate. Our major donors and supporters are listed at the back of this report. We thank them all most warmly for their support for our work.

Finally, a special word of thanks to Diane Morcom who stepped down as Management Committee Chair in July. I pay tribute to her stewardship both of this Committee and previously of the Administration Committee. Fortunately, Diane remains fully engaged as a Trustee and a continuing member of this Committee.

James Kember

Chair, Development Committee
(from July 2020)

Friends of The New Zealand Portrait Gallery

2020 opened with the exhibition of finalists in the Adam Award for Portraiture. We had little idea of what lay ahead for the world, let alone our corner of the South Pacific but we were able to celebrate a vibrant opening. We were organising our first Friends' visit of the year to view artworks in Parliament when Level 4 lockdown closed our world for two months. In early July we were fortunate to reschedule the Parliamentary art tour which included a display for the Friends of artefacts of historical significance not usually seen by the public.

We followed this with a hugely successful trip to view two private art collections in the Wellington area. We are most appreciative of this generous



Former Presidents of the Friends, Diana Morrison, Joy Dunsheath and current President Jane Kirkcaldie, are photographed at the Founders Day celebrations with a portrait of the first President of the Friends, Natalie Smith.

opportunity given by the owners who opened their houses for our visit.

2020 marked the 25th anniversary of the Friends and the 30th anniversary of the founding of the NZPG Trust. We celebrated these milestones with a reception to follow the second Ovenden Lecture, *House & Street*, delivered by Lydia Wevers. The Friends were delighted that Lydia accepted our invitation to be an Honorary Life Member of the Friends.

Membership has continued to grow with 67 new Friends. The donations from the Friends enabled the Committee to contribute \$10,000 to the NZPG for operating costs in 2020 and a further \$20,000 guaranteed

Diana has been on the Committee for the entire 25 years and President for nine. She has been a contributor *extraordinaire* and assures us that her interest and love of the Portrait Gallery will continue. Gwynn Narraway has also retired. We have appreciated and benefitted from Gwynn's contributions in many different ways.

This was followed by a panel discussion moderated by Councillor Nicola Young with Jane Aim, a long-serving Friend and Committee member, reflecting on key moments in the history of the Gallery; Dr Keith Ovenden reviewing current times; and Jaenine Parkinson speaking to the future.

Founding member Jane Aim was

“... Membership has continued to grow with 67 new Friends ...”

for 2021. The Friends have continued to support exhibition openings, to promote awareness of the Portrait Gallery and to encourage new memberships.

Founders Day, traditionally the final event of the Gallery year, was co-hosted by the Trustees and the Friends. We farewelled Director Jaenine Parkinson on her parental leave and welcomed Acting Director, Brian Wood. The Friends Committee farewelled two of our members. Dr Alan Bollard acknowledged Diana Morrison who has retired after 30-plus years as a founder of the New Zealand Portrait Gallery and of the Friends.

nominated as an Honorary Life Member in recognition of her service and contribution to the Portrait Gallery.

I thank the dedicated Friends' Committee members and volunteers and we thank you, the Friends membership, for your continued vital support and interest. I am stepping down as President and am delighted that Janet Waite will be taking over in January 2021. With your support we look forward to building on the achievements of the Friends.

Jane Kirkcaldie
President

Trustees and Officers of The New Zealand Portrait Gallery 2020

Patron	Her Excellency The Right Honourable Dame Patsy Reddy GNZM QSO, Governor-General of New Zealand
Trustee Emerita	Elizabeth Stringer
Trustees	Dr Alan Bollard CNZM (Chair) Michael Curtis Dr David Galler Phillip Green Helen Kedgley Diane Morcom CNZM, CVO Garry Nicholas Donna Nicolof Richard Thomson Eve Wallace
Honorary Treasurer	Michael Curtis
Management Board	Denise Almao James Kember Heather Ann Moodie
Director	Director Jaenine Parkinson MA (Auckland) (until 18 December 2020)
Acting Director	Brian Wood (from 7 December 2020)
Registrar & Administrator	Talei Langley BA (Hons) (VUW)
Audience Engagement Coordinator	Melissa O'Brien BA (Hons) (VUW); PGCert Paralegal Studies (USD) (until 10 September 2020) Brianah Lee BA (Hons) (VUW) (from 19 October 2020)
Friends and Donor Support	Denise Almao
Graphic Designer	Jess O'Brien
Exhibition Installer	Tom Westlake
Gallery Supervisors	Sambrene Chandler, Paul Johnston, Georgie Keyse, Brianah Lee, Tia Nepia-Su'a, Maya Neupane, Ian Ngan, Mike Tiller

Management Committee

Diane Morcom
(Chair) until July 2020
James Kember
(Chair) from July 2020
Denise Almao
Dr Alan Bollard
Mike Curtis
Phillip Green
Helen Kedgley
Heather Ann Moodie
Jaenine Parkinson

Development Committee

(until August 2020)
James Kember
(Chair)
Denise Almao
Dr Alan Bollard
Jane Kirkcaldie
Heather Ann Moodie
Niels Holm
Jaenine Parkinson
Janet Waite

Programme and Acquisitions Committee

Jaenine Parkinson
(Chair)
Mark Crookston
Helen Kedgley
Dr Vincent O'Malley
Dr Keith Ovenden
Dr Rebecca Rice
Julia Waite
Matariki Williams

Friends Committee

Diana Morrison
(President Emerita)
Jane Kirkcaldie
(President)
Jane Aim
Denise Almao
Jennifer Button
Joy Dunsheath
Gwynn Narraway
Sue Upton
Janet Waite
Carla Wild
Shona Willis

Gallery Volunteers

Di Berry
Margaret Calder
Rosemary Cole
Elizabeth Ellis
Kendall Gibson
Paul Johnston
Cr Paul Lambert
Sophie Levestam
Bridget Mahy
Kath O'Shaugnessy
Margaret Walls
Jane Wright

Liz Stringer Curatorial Intern

Paul Johnston

VUW Museum and Heritage Studies Intern

Maddie Mctavish

Gallery Finances

Summary financial statements are set out below. These were prepared prior to the conducting of a review engagement as required under the Charities Act 2005. The full 2020 financial statements and results of the review conducted by the Accounting for Charities Trust are available on the NZ Portrait Gallery's website and the Department of Internal Affairs Charities Services website.

THE NEW ZEALAND PORTRAIT GALLERY TRUST STATEMENT OF FINANCIAL PERFORMANCE For the year ended 31 December 2020

	Notes	2020	2019
		\$	\$
Revenue			
Donations, fundraising and other similar revenue		261,811	205,136
Fees, subscriptions and other revenue from members		154,881	122,367
Revenue from providing goods or services		47,175	69,791
Interest, dividends and other investment revenue	1	3,336	3,254
Other Revenue		114,416	-
Total Revenue		581,619	400,548
Expenses			
Expenses related to public fundraising		6,185	3,024
Volunteer and employee related costs	5	220,104	208,642
Costs related to providing goods and services	2	384,425	241,936
Other expenses		34,433	10,326
Total Expenses		645,147	463,928
Surplus/(Deficit) for the year		(63,528)	(63,380)

STATEMENT OF FINANCIAL POSITION

As at 31 December 2020

	Notes	2020	2019
		\$	\$
ASSETS			
Current Assets			
Bank accounts		82,513	172,775
Debtors and prepayments	4	77,478	13,069
Interest receivable		641	2,464
Inventory	4	8,997	10,326
GST		7,505	-
Total Current Assets		177,135	198,634
Non-Current Assets			
Property, Plant and Equipment	4	208,973	196,385
Shed 11, Prepaid Rent	2	841,000	899,000
Investments		155,669	150,622
Total Non-Current Assets		1,205,642	1,246,007
Total Assets		1,382,777	1,444,641
LIABILITIES			
Current Liabilities			
Accounts Payable		24,496	5,116
Employee Entitlements		17,741	18,280
GST		-	892
Grants Received in Advance		28,483	46,225
Other Current Liabilities		2,973	1,517
Total Current Liabilities		73,693	72,029
Total Liabilities			72,029
Total Assets less Total Liabilities (Net Assets)		1,309,084	1,372,612
Accumulated Funds			
Equity/members funds		1,216,487	1,279,867
Current year earnings		(63,528)	(63,380)
Reserves	3	156,125	156,125
Total Accumulated Funds		1,309,084	1,372,612

STATEMENT OF FINANCIAL POSITION

As at 31 December 2020

Notes:

- 1 Other revenue includes COVID-19 wages subsidy and insurance claim.
- 2 The Trust's total accumulated funds of \$1,309,084 mostly consists of the prepaid gallery rental of \$841,000 which accounting rules require to be allocated over the period of the lease. The annual rental allocation of \$58,000 is included in the Statement of Financial Performance under costs related to providing goods or services.
- 3 The Trust's reserves include \$100,000 allocated by the Trustees to a Leasehold Renewal Fund to provide for a new lease on the expiration of the current 25-year lease.
- 4 An insurance valuation of the collection was made in December 2016. A 40% portion of the total valuation has been taken up in the Trust's accounts.
- 5 The Trust is dependent on the voluntary services of many supporters of the Gallery, the value of which is not recognised in the financial statements.

Gallery Benefactors 2020

Masters Circle

Denise Almao
Dr Alan Bollard and
Jenny Morel
Kate Fortune *
Peter and Annabel
Graham *
Sir Michael and Lady
Hardie Boys
Mary Annette Hay
Avenal and John
McKinnon
Dr Keith Ovenden
Elizabeth Stringer
and Rob Morrison
Janet Waite

Artists Circle

Suzanne Blumhardt
Victoria Daniel
Robin Dossor
Beverley Eriksen *
Diana Morrison
Merwyn Norrish
Councillor Nicola Young

Canvas Circle

Sarah Acland *
Anonymous (1)
Bettina Bradbury
Gael Black
Barbara and Don
Crump
Deborah Cutfield *
Peter Diessl
Tony and Diana
Doogue
Diana Duff Staniland *
Val Fergusson *
Hugh Fletcher *
Hon Laurie Grieg *
Sir Roger Hall *
Mark Reese and
Joanne Hansen *
Anabright Hay
Sir Ken and Lady Keith
Jane and Denis
Kirkcaldie
Dr David Langley
Ann Mallinson
MFAT Alumni Group
Heather Ann Moodie *
Diane Morcom *
John Nankervis
Richard Nelson *
Jim Norris
Neil and Rachel
Plimmer
Peter Scholes
John Davidson and
Brigitte Schuette
David Shand*
Anna Shires
Marie and Gordon
Shroff
Adrian and Elizabeth
Simcock *
Sandra Simpson *
William and Jackie
Sommerville *
Edith Tripp
Judith Trotter
John and Sue Upton *
Neil Walter
John and Carla Wild
Dr Bridget Williams
Kirsty Wood
Jane Wright *

Graphite Circle

Kristin and Tony Arthur
Jane Aim
Elizabeth Alley
Beverley Shore Bennett
Rosemary Bradford
Jocelyn Brandon *
Jennifer Button
Rick and Lorraine Christie
Lynne Ciochetto
Professor Margaret Clark
Yvonne and Peter Cottier
Susie des Tombe
Elizabeth Ellis
Peter Fabian *
David and Jan Fullarton *
S. C. Gentry
Jonathan Gooderham
Bernard and Angela Hill
Kathy Jones
Jocelyn Afford and
Stephen Kos
Peter Leslie
Anne McLean
Pamela McLemore
Simon and Pip Murdoch
Alison and Michael Quigg
Suzanne Snively and
Ian Fraser
Faith Taylor
Richard and Erin
Tuckey
Michael and Margaret
Walls
Dr Ann Weston
T Shailer Weston *
Priscilla Williams

Corporate Sponsors, Trusts and Foundations

Principal Partners



Chris and Kathy Parkin



Margaret Doucas Trust



Guild Holdings Ltd

Major Partners



Te Tari o Te Kiingitanga | The Office of the Kiingitanga
Te Tarahati Ohaoha o Bethlehem | Bethlehem Charitable Trust
Te Tarahati Marae o Tuurangawaewae | Turangawaewae Marae Trust



Lottery Environment and Heritage Fund
The Gerrard and Marti Friedlander Trust



Chinese Poll Tax Heritage Trust
華人人頭稅歷史遺產信託委員會

Deane Endowment Trust
Aileen Drewitt Trust



Friends of the
New Zealand Portrait Gallery



NIKAU FOUNDATION



Programme Partners

Adam Art Gallery
Te Pātaka Toi

Auckland Art Gallery
Toi o Tāmaki

Auckland War Memorial Museum
Tāmaki Paenga Hira

Christchurch Art Gallery
Te Puna o Waiwhetū

Museum of New Zealand
Te Papa Tongarewa

The Dowse Art Museum

University of Canterbury
Te Whare Wānanga Waitaha

Wallace Arts Trust

Tim Melville Gallery

Royal Society
Te Apārangi

Fletcher Trust Collection

Victoria University of Wellington
Classics Museum

Te Puna Foundation

Turnbull Endowment Trust

The Friends of the Turnbull Library

The Supreme Court

New Zealand Parliament

Portrait Acquisitions



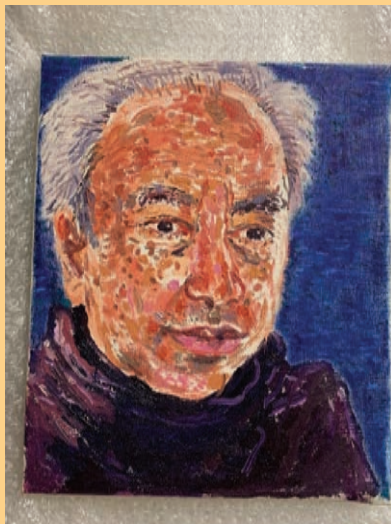
Sacha Lees *Sometimes an outline coloured in* 2019.
Oil on board. Winner of Adam Portraiture Award 2020.



Felicity Priest *Kate Harcourt off-stage* 2017. Oil.
Adam Portraiture Award Finalist 2018.
Gift of Suzanne Blumhardt and Peter Hatfield.



Gavin Chai *Big Brother (Fritz Gabriel)* 2017.
Oil on canvas. Adam Portraiture Award Finalist 2018.
Gift of the artist.



Susan Wilson *Witi Ihimaera* 2014. Oil on linen.
Gift of the artist.



Image: Andy Spain