

**New Zealand
Portrait Gallery**
Te Pukenga Whakaata



ANNUAL REPORT 2012

INTRODUCTION

This has been a successful though strenuous year for the New Zealand Portrait Gallery. All of our activities occurred against the difficult background of the seismic strengthening and interior refurbishment of our Gallery premises at Shed 11. Continuity and creativity in the context of this disruption owed much to the diligence and responsiveness of our professional staff, and also to the commitment of our supporters, in particular those who serve as Committee members and Trustees.

In addition to changes at Shed 11 there were changes in personnel. In October Sir Michael Hardie Boys stepped down from the Chairmanship of the Gallery Trust after six years at the helm. The Gallery is deeply grateful for the hard work, patience and good counsel that he brought to the position at a time of transformation, and is pleased that he has agreed to stay on as a Trustee. His successor in the Chair, Dr. Keith Ovenden, has been deeply involved with every aspect of the Gallery's development over the past seven years. Alan Bollard retired as a Trustee in December. His advice and guidance made a considerable contribution to our development, and will be missed. The Trustees expect to make an announcement about new Trustees in the first half of 2013.

John Sladden retired as Hon. Treasurer in 2012 but not before successfully installing his successor, Richard Tuckey. John had done an immense amount for the Gallery over his eight years as Treasurer, and we are pleased that he agreed to continue as a member of the Management Board.

Our focus, now that the Gallery space and new offices are secured and improved, is on financial security. There are many uncertainties, but we will all be working hard to achieve success.

EXHIBITIONS AND ASSOCIATED EVENTS HELD DURING 2012

16 Nov 2011 – 12 February 2012, **Makers of Modern New Zealand** Curated by Brian Easton; and **Reflecting Mana - portraits of Tainui:** by Alan Bekhuis, contemporary daguerreotypes curated by Paul McNamara. Visitor numbers 7208

22 February – 12 April 2012, **2012 Adam Portraiture Award** Visitor numbers 7376

Our judge was Dr Christopher Chapman, from the Australian NPG Canberra who awarded the prize to Stephen Martyn Welch for his self-portrait: *3 Nights, a Mirror & Loads of Coffee*. Dr Chapman considered the standard of entries was sufficiently high to make five Highly Commended awards to John Badcock, Lee Byford-Daynes, Nick Cuthell, Sandro Kopp & Rik Schinkel. Walk-through tours were given to the Friends of NZPG on 23 February and to the Friends of the Wellington International Arts Festival on 25th February.

29 March, Our Patron, His Excellency the Governor-General of New Zealand, Lieutenant General the Rt. Hon. Sir Jerry Mataparae and Lady Janine Mataparae visited the Gallery to view the Adam Award Portrait Exhibition.

29 March, evening, Susan Wilson spoke at the Gallery on "*Freud in Nottinghill*." **The Adam Award** subsequently toured to Lopdell House in Auckland, The Percy Thomson Gallery, Stratford and The Millennium Gallery in Blenheim.



3 Nights a Mirror and Loads of Coffee by Stephen Martyn Welch. Winner of the 2012 Adam Portrait Award



Denis & Verna Adam with David Carson Parker at the opening of the Adam Portrait Award 22 February 2012

26 April – 22 July 2012, **All Woman: a modern portrait of New Zealand women.**

Photographs by Bev Short. Visitor numbers 7763

In association with this exhibition the following series of lunchtime talks was held in the gallery:

2nd May	Bev Short - "My All Woman Journey."
9 th May	Catriona Williams – "Dare to Dream."
16 th May	Dame Fiona Kidman – "The Shadow of Asia; In the Footsteps of a Writer."
23 rd May	Elena – "My Blessed Life as a Violinist."
30 th May	Jules Esther - "Our young people are our greatest resource - Let's get alongside them."
6 th June	Rae Julian – "Women and the UN."
13 th June	Prue Hyman – "The F word – why we still need feminist analysis."
20 th June	Dr Rosy Fenwicke – "To be or Not to be. Who makes the decisions? Women and abortion in the 21st century."
27 th June	Ruth Herbert – "Violence against women – our national shame."
4 th July	Kerry Prendergast – "My Defining Five C's."
11 th July	Vanisa Dhiru - "Young Women in Leadership: Developing the Role Models for Tomorrow."
18 th July	Kathrine Switzer - "It's not about running, it's about changing women's lives".



Tanja Maioha & Te Kaahurangi Maioha
by Bev Short

30 May – 22 July, **Recent Acquisitions For the New Zealand Portrait Gallery Collection.**

Amongst portraits shown were: Sir Henry Raeburn's *Captain James Crawford*, John Horsburgh's *James Coutts Crawford*, and *Jane Inglis Crawford*, lent by the Crawford family, *Patricia St John*, donated by the artist Alan Pearson, and *Kiri te Kanawa* by Peter McIntyre, on loan from the Hunn family.

28 July – 8 October 2012, **The Gallery was closed for seismic strengthening & refurbishment.**

Sunday 14 October, **Founders' Day commemorations & re-opening of the Portrait Gallery**

11 October - 6 December, the Gallery was host to functions by other arts institutions as follows:

11 – 20 October, **What do you Dream?** The Little Lotus Project by Spinning Top; and **Portraits of the Founders of NZPG.** Visitor numbers 1117

21 October – 29 October, **BORN spectacle for Neo Natal Trust** in association with Weta Workshops

30 October – 4 November, **4 @ The Portrait.**

8 November – 22 November, **Still Dancing:** Photographic portraits of Dancers by Stephen A'Court - to mark the 45th anniversary of the New Zealand School of Dance. Visitor numbers 1587

In association with this exhibition two lunchtime talks were held in the gallery:

14 November	Garry Trinder & Stephen A'Court – "The process of photographing dancers."
21 November	Ann Rowse, Dawn Sanders & Sarah Foster-Sproull – "Reflections on roles within NZ School of Dance by graduates and teachers."

24 November – 6 December, **The Gloaming:** sculpted portraits of the Faery world by Johnny Fraser-Allen of Weta Workshops. Visitor numbers 2477

12 December 2012 – 24 February 2013, **Blue Smoke: Portraits from the Lost Dawn of New Zealand Popular Music**, curated by Chris Bourke; and **37:** Photographic portraits of Christchurch earthquake survivors by Doc Ross. Visitor numbers 5855

Our visitor total for the year was 27,528, an increase upon 2011's total of 25,156, especially from school groups, even though the Gallery was closed for almost three months.

Di Lucas by Doc Ross



ADMINISTRATIVE ISSUES

The strengthening of Shed 11 in line with building code requirements in August/September 2012 gave us the opportunity to reconfigure and upgrade the inside of the building. The entrance was remodelled, with a new canopy, and glass doors bearing our logo; the front desk and the Director's office were upgraded, and a second office built at the north end of the gallery. A climate controlled area was created at the south end of the gallery, providing storage for our collection. Above, a mezzanine floor was added to create a meeting space. Thanks to a generous donation from the Friends a small, well equipped kitchen was created near the south entrance. Together, these works have enabled us to move our entire operation to Shed 11. The work by architects CCM, engineers Dunning and Thornton, contractors Sparrow Construction and Aurecon mechanical services was done on time, to the highest professional standards, in close consultation with us, and with great consideration for our requirements. The Trustees are very grateful to Wellington Waterfront Limited (WWL) for their superb management of the project and for their great generosity in funding part of the internal changes to Shed 11, as well as the seismic strengthening. They are grateful too, to the Director and Gallery Administrator for the enormous effort they put into overseeing the move of our entire possessions from Shed 11 to temporary accommodation during the work, and for the move back, and reorganisation three months later.

Changes to the Gallery have given us a fresh, safe space, well adapted to our present requirements. Shed 11 is now a very attractive, well-located venue for functions. We intend to promote the letting of the Shed more vigorously now, and are in the process of reviewing our terms and conditions.

Turnbull House, where we previously had our offices, was closed by our landlord, the Department of Conservation, for seismic strengthening, and we were obliged to move out late last year. However, the Department has kindly allowed us to continue to store some of our belongings in Turnbull House for the time being, and has indicated that we will have the right to resume our tenancy when the building has been strengthened.

Two projects were undertaken during the year to improve our ability to communicate with members of the Gallery community and the wider public. A new website was launched at the end of 2012. The Trustees are very grateful to Jeff Hunt, who developed and maintained the original site, and to Barbara Cribb, who led the meticulous work on the design and content of the new site through 2012. The website includes, for the first time, a searchable gallery of works from our own collection.

At the same time a new database of information on gallery supporters has been developed. This makes it much easier and more efficient to communicate with supporters, donors, sponsors and Friends. A second phase of the project, to improve our financial information, was under way at the end of the year.

We received generous donations from the Wellington Community Trust and two anonymous donors for the website, and from an anonymous donor for the database. The Trustees are grateful for these contributions to these important new means of managing ourselves more effectively.

Anita Robertson was appointed Gallery Administrator in April 2012, following the departure of Jude Grogan. In what has been a very demanding and disruptive year for the gallery Anita has played a critical role in supporting the Director and leading the administrative side of the work of the office.

Keith Ovenden, Chairman, New Zealand Portrait Gallery Trust.

THE FRIENDS' ASSOCIATION

The committee of the Friends of the Portrait Gallery met regularly throughout the year. These meetings are attended by the Director, Avenal McKinnon, and the Gallery Administrator, and any support that the Friends can give, both practical and financial, is discussed.

In April during the Adam Portrait Award exhibition, the Committee organised a luncheon at the Gallery for our long-time, mostly original, members, to view the exhibition more comfortably than alongside the somewhat challenging crowd on opening night. Avenal McKinnon and Keith Ovenden spoke of coming exhibitions and future developments, and both warmly thanked those present for the vital support they have given to the Gallery over many years.

In the field of education the Friends continue to provide support. We thank Andrew Turquet, Joy Dunsheath and Dawn Ferguson for their assistance given during school visits. We are most grateful to the Wellington Decorative Fine Arts Society for their donation of \$2,000 to enable us to offer transport costs to low decile schools that visit the Gallery.

The Friends contributed a donation of \$10,000 to upgrade the kitchen area at the southern end of Shed 11 with a complete fit-out of benches, shelving and cupboards, together with the installation of a dishwasher and microwave.

The Friends continue to provide practical help, particularly at exhibition opening functions and at entertainment such as the Governor-General's visit during the year. We are aware that we must continue to look for new areas of interest to encourage and enhance membership of the Friends and thus strengthen the vital support that this gives to the Gallery.

I should like to thank my Committee for their work and support during the year, and to express my admiration for the dedication and work of all members of the Board of Trustees and associated Committees. With this go my thanks to Avenal McKinnon and Anita Robertson for making it such a pleasure to be involved with our New Zealand Portrait Gallery.

Diana Morrison, President, Friends of the Portrait Gallery



Diana Morrison and Sir Michael Hardie Boys

THE GALLERY'S FINANCES

The Gallery had a good financial result in 2012 with an operating surplus of just over sixty thousand dollars, compared with a large deficit in 2011. This result is thanks to the continuing generosity of our special donor and to an excellent response from our members and supporters whose contributions increased significantly in response to our appeals. The much improved result on our exhibitions activity reflects a policy of moving to lower cost exhibitions compared with the expensive Matches exhibition held in 2011, which unfortunately incurred a large loss. We were also able to achieve savings on our administrative costs due to a staffing vacancy and to the closure of the Gallery during the earthquake strengthening of the building.

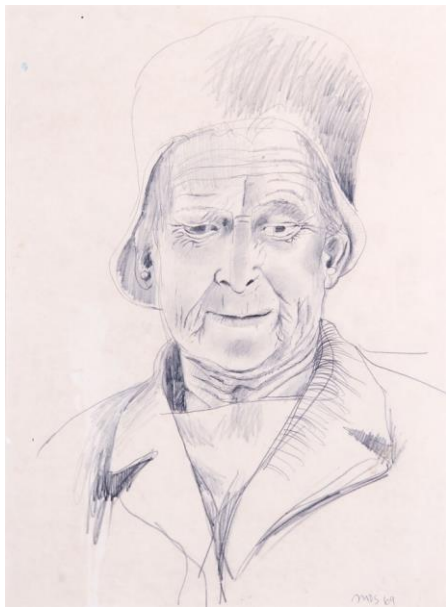
Looking forward the picture is much less promising. We need to raise \$250,000 in 2013 to cover the cost of overheads and the planned exhibitions. Obtaining sponsorship for exhibitions so that they are self funding is proving very difficult despite the sterling efforts of our fundraising team. Corporate sponsorship is increasingly difficult for all cultural organizations with so many groups competing for limited funds. Income from rental of the Gallery is a useful source of additional income but provides a relatively small part of what we need. And it is important to note that of the \$1.553 million in accumulated funds as at 31 December shown in the Statement of Financial Position (below) \$1.305 million represents prepayment of our 25 year lease, which under accounting standards is required to be reported as an asset.

The Management Board has put in place a robust fundraising plan alongside a budget founded on conservative principles. But for 2013 we will need to rely more than ever on our supporters to provide donations. Our revised data base of supporters will enable us to manage this process much better than in the past. Donation requests will now be sent out in March along with the annual report so that advantage can be made of the tax deductibility in the 2012/13 tax year, if our supporters choose.

The endowment fund that we have established to attract legacies to the Gallery will undoubtedly improve our financial base but this will impact only in the longer term.



Jill's Brother (Bill Buxton) By Kay McCormick



Portrait of the Artist's Mother, 1969, by Michael Smither



Ray Paparua. From Blue Smoke, ATL PA1-f-192-23-03

AUDITOR'S REPORT

To the readers of the financial statements of The New Zealand Portrait Gallery Trust I have audited the financial statements. The financial statements provide information about the past financial performance of the Charitable Trust and its financial position as at 31 December 2012. This information is stated in accordance with the accounting policies set out on pages 7-8.

Board of Trustees responsibilities

The Board of Trustees is responsible for the preparation of financial statements which give a true and fair view of the financial position of the Charitable Trust as at 31 December 2012 and the results of its operations for the year ended on that date.

Auditors' responsibilities

It is my responsibility to express an independent opinion on the financial statements presented by Board of Trustees and report my opinion to you.

Basis of opinion

An audit includes examining, on a test basis, evidence relevant to the amounts and disclosures in the financial statements. It also includes assessing:

the significant estimates and judgements made by the Board of Trustees in the preparation of the financial statements:

whether the accounting policies are appropriate to the Charitable trust's circumstances, consistently applied and adequately disclosed.

I conducted my audit in accordance with New Zealand Auditing Standards issued by the Institute of Chartered Accountants of New Zealand. I planned and performed my audit so as to obtain all the information and explanations which I considered necessary in order to provide me with sufficient evidence to obtain reasonable assurance that the financial statements are free from material misstatements, whether caused by fraud or error. In forming my opinion I also evaluated the overall adequacy of the presentation of information in the financial statements.

Unqualified opinion

I have obtained all the information and explanations I have required.

In my opinion the financial statements comply with New Zealand generally accepted accounting practice: give a true and fair view of the financial position of the Charitable Trust as at 31 December 2012 and the results of its operations for the year ended on that date.

My audit was completed on 18 February 2013 and my unqualified opinion is expressed as at that date.

J E Fokerd, CA Wellington

The New Zealand Portrait Gallery Trust

Statement of Financial Performance

For the year ended 31 December 2012

	Notes	2012 \$	2011 \$
Income			
Donations		94,738	52,525
Donation - Special Donor		125,000	125,000
Friends of the Gallery		10,000	
Grants		5,350	
Interest, Gallery rental & other		11,141	3,528
Exhibition Income		<u>66,410</u>	<u>101,185</u>
Total Income		<u>312,639</u>	<u>282,238</u>
Expenses			
Salaries & Wages		84,962	90,148
Gallery operation		95,502	110,904
Office		16,021	15,886
Publicity		5,791	6,825
Professional		9,340	5,066
Exhibition Costs		<u>63,328</u>	<u>166,901</u>
Total Expenditure		<u>274,944</u>	<u>395,730</u>
Operating Surplus (-Deficit)		37,695	-113,492
Uplift in value of Art Collection - reflecting the donation of many works	1	23,387	-
Surplus (-Deficit)		<u>61,082</u>	<u>-113,492</u>

Statement in Movements in Equity

For the year ended 31 December 2012

		2012	2011
Accumulated Funds			
Balance 1 January 2012		1,490,356	1,603,848
Add: Surplus (-Deficit)		61,082	-113,492
Less: Transfer to Revaluation Reserve		<u>-23,387</u>	<u>-</u>
Balance 31 December 2012		1,528,051	1,490,356
Reserves			
Williams Memorial Fund		2,025	2,025
Art Collection Revaluation	1	<u>23,387</u>	<u>-</u>
		25,412	2,025
Total Equity		<u>1,553,463</u>	<u>1,492,381</u>

The notes attached are to be read with the accounts.

The New Zealand Portrait Gallery Trust

Statement of Financial Position

As at 31 December 2012

		2012	2011
		\$	\$
Trust Funds		<u>1,553,463</u>	<u>1,492,381</u>
Represented by:			
Current Assets			
Cash at Bank		179,697	86,460
Accounts Receivable		7,151	22,545
GST		<u>4,656</u>	<u>2,932</u>
		191,504	111,937
Non Current Assets			
Prepaid Lease	1	1,305,000	1,363,000
Art Collection	1	80,000	56,613
Fixed Assets	1,2	<u>43,004</u>	<u>3,038</u>
		1,428,004	1,422,651
Total Assets		<u>1,619,508</u>	<u>1,534,588</u>
Current Liabilities			
Accrued Charges	2	42,390	-
Accounts Payable		15,538	16,153
Payroll		3,338	2,694
Other balances		<u>4,779</u>	<u>23,360</u>
		66,045	42,207
Net Assets		<u>1,553,463</u>	<u>1,492,381</u>
On behalf of the Trustees			
Michael Hardie Boys	Keith Ovenden		

Notes to the financial statements.

1 Statement of accounting policies

Reporting Entity: The New Zealand Portrait Gallery Trust is registered under the Charitable Trust Act 1957. The financial statements of the entity have been prepared in accordance with the Financial Reporting Act 1993.

Measurement Base: The accounting principles recognised as appropriate for the measurement and reporting of financial performance and financial position are followed in the preparation of these financial statements, except for the revaluation of the Art Collection.

Differential reporting: In terms of the framework for differential reporting an entity is exempted from certain requirements of financial reporting standards if it satisfies the criteria in the framework; such an entity is called a qualifying entity. The New Zealand Portrait Gallery Trust is a qualifying entity for differential reporting by virtue of the fact that it has no public accountability and it is not large (as defined in the framework). Accordingly, all relevant exemptions have been applied.

Non Current Assets

Prepaid Lease: During 2010 a prepaid lease of the Shed 11 Gallery was negotiated for a period of 25 years commencing 1 July 2010. The rent will be expensed over the period of the lease.

Art Collection: By taking up 40% of the insured value of the collection (excluding loaned items) a Revaluation Reserve has been created. In so doing the Trustees are reflecting in the records a portion of the value of donated works.

Fixed assets: are valued at cost less depreciation

Depreciation: all items are depreciated on a straight line basis at rates that will write off the cost over the life of the asset. The rates on significant items in use are:

Art storage unit	5%
Kitchenette	20%
Computers	30%

Taxation: The trust has a charitable status and is exempt from income taxation.

Goods and Services Tax: The financial statements were prepared on a GST exclusive basis.

Accounts Receivable: Accounts receivable are recorded at net realisable values.

Donated Services: The trust is dependent on the voluntary services of many supporters of the Gallery the value of which is not recognised in the financial statements.

Changes in Accounting Policies: A change has been made to the valuation of the Art Collection. There have been no other changes to policies.

2 Depreciation

	Cost			Depreciation			Book Value
	1/01/2012	Additions	31/12/2012	1/01/2012	Charge	31/12/2012	31/12/2012
Leasehold Improvements	-	21,785	21,785		359	359	21,426
Gallery Equipment	3,797	18,234	22,031	759	1,563	2,322	19,709
Office Equipment	13,127	2,137	15,264	13,127	268	13,395	1,869
	16,924	42,156	59,080	13,886	2,190	16,076	43,004

3. Accruals: The Portrait Gallery premises in Shed 11 on the Wellington waterfront was earthquake strengthened during August – September. The Gallery took advantage of the strengthening work to make previously planned interior alterations to improve storage, reception and office space. The cost of interior changes has yet to be invoiced but has been accrued in the accounts based on figures advised.

TRUSTEES & OFFICERS OF NEW ZEALAND PORTRAIT GALLERY 2012

Patron:	The Governor-General of New Zealand, His Excellency Lt Gen the Rt. Hon Sir Jerry Mateparae, GNZM, QSO
Vice Patron:	Mrs Judy Williams, MNZM
Trustee Emeritus:	Mr Denis Adam, CNZM
Trustees:	Rt Hon Sir Michael Hardie Boys, GNZM, GCMG, KSt.J, QSO, (Chair to 14 October 2012) Dr Keith Ovenden (Chair from 14 October 2012) Dr Alan Bollard, CNZM (Resigned December 2012) Mr Hugh Fletcher Ms Diane Morcom, CNZM, CVO Mr David Shand Ms Elizabeth Stringer Ms Eve Wallace
Treasurer:	Mr Richard Tuckey
Director:	Ms Avenal McKinnon MA, Canterbury; MA, Courtauld Institute
Administrator & Registrar:	Ms Anita Robertson
Public Relations	Dr Elizabeth Alley QSO

Programme Committee:

Dr Keith Ovenden (Chair)
 Ms Avenal McKinnon
 Ms Sarah Dennis
 Ms Dawn Ferguson
 Ms Joan McCracken (A.T.L.)
 Mr Gavin McLean (MCH)
 Prof Jonathan Mane-Wheoki (Elam)
 Mrs Diana Morrison
 Prof Linda Tyler (University of Auckland)

Finance & Planning Committee

Mr David Shand (Chair)
 Ms Avenal McKinnon
 Ms Denise Almao
 Ms Diane Morcom
 Dr Keith Ovenden
 Mr Richard Tuckey

Administration Committee

Ms Diane Morcom (Chair)
 Ms Denise Almao
 Miss Barbara Cribb
 Ms Avenal McKinnon
 Dr Keith Ovenden
 Ms Anita Robertson
 Mr Richard Tuckey
 Ms Liz Stringer

Fundraising Group:

Ms Denise Almao
 Ms Suzanne Blumhardt
 Ms Sarah Dennis
 Mr Brian Lynch ONZ

Friends' Committee

Mrs Diana Morrison (President)
 Mr Richard Tuckey (Treasurer)
 Ms Jane Aim
 Ms Dale Densem
 Ms Joy Dunsheath
 Ms Jane Hyder
 Ms Jenny Button
 Ms Francoise Norrish
 Ms Ann Shires



Chris Bourke, Elizabeth Alley, Sarah Denis and Dominique Santini at the opening of *Blue Smoke* 12 December 2012

The New Zealand Portrait Gallery Trust is a registered charity that welcomes financial support from the public by way of donations. There are three tiers of donor membership of the Gallery: the Masters Circle for an annual donation of \$5,000 or more; the Artists Circle for annual donations from \$2,000 to \$4,999; and the Canvas Circle for annual donations from \$250 to \$1,999. All donations attract a one third tax rebate. Members who have pledged annual donations will receive a reminder. For details on how to become a member please go to our website at www.nzportraitgallery.org.nz or send an e-mail inquiry to admin@nzportraitgallery.org.nz or phone (04) 472-8874 or (04) 472-2298 or write to the New Zealand Portrait Gallery, P.O. Box 25540, Wellington 6146.

Gallery Donor Members 2012**Masters Circle**

Anonymous (x2)	Mr & Mrs G Fortune	Mr & Mrs Graham
Sir Michael & Lady Hardie Boys	Mrs M A Hay	Mr J.K McHardy (Murryfield Trust)
Mr & Mrs J McKinnon	Bill & Judy Williams Bequest	

Artists Circle

Anonymous (x2)	Ms S Blumhardt	Mr H Fletcher & Dame S Elias
Mr J & Mrs D Morrison	Dr K Ovenden	Mr C Post
Mr J Todd	Ms L Sandri	

Canvas Circle

Ms D Almao
Lady Beattie
Deane Endowment Trust
Ms D Duff-Staniland
Mr R & Mrs D Hall
Ms A Mallinson
Mr J Norris
Mr N & Mrs R Plimmer
Ms E Tripp
Mr J Weir
Mr R & Mrs J Woods

Dr E Alley
Dr A Bollard & Ms J Morel
Mr & Mrs F A W Des Tombe
Mr I Fraser & Ms S Snively
Ms H Hutton
Ms D Morcom
Ms E O'Brien
Mr J Sladden
Ms J Trotter
Ms G West
YWCA

Mr & Mrs T Arthur
Mr Davidson & Ms Schutter
Hon & Mrs J A Doogue
Hon L M Greig
Mrs G Jaynes
Lady Mowbray
Mr F Pearson
Cdr & Mrs Smith
Dr A Trotter
Dr A Weston

Other Donors

Mr Chris Andersen
Ms R Best
Mr B Bonnor & Mrs A Becker
Mr & Mrs Burton
Mr & Mrs Dawkins
Ms H Fawthorpe
Mr & Mrs Gorman
Prof & Mrs Holborow
Mr & Mrs Laking
Prof & Mrs Mann
Mrs P Marilyn Scott
Mr & Mrs Murdoch
Ms A Salt
Ms J Talbot
Mrs J Wellings
Mr A L & Mrs M F Williams

Ms A T Ashley-Jones
Ms Gael Black
Mrs J Bornholdt
Ms Y Chisholm
S Edmonds & L Taiaroa
Mr & Mrs Fullarton
Ms A Grant
Mr & Mrs Horton
Mr D Lewis
Mrs B Martin
P.M Miles
Mr R Rutherford
Ms K Sandall
Mrs B Thomson
Mr T S Weston
G N & CM Wright

Ms S Bagnall
S Beatie & P Fenwick
Mr & Mrs Brandon
Mr P Craig
Ms E Ellis & Mr E Bowen
Mrs D Glover
Mrs R Hatrick
Ms J Kac
Mrs A Mcleod-Jones
Mrs A Martin-Buss
Ms H Miller
Dr J & Dame L Salas
Ms A Shires
Mr & Mrs Watchman
Ms S Williams

Corporate Donors

Adam Foundation
Friends of the New Zealand Portrait Gallery
Laurie Bushell Endowment Fund through the Nikau Foundation
Lion Foundation
Museum Art Hotel
Wellington Community Trust
Wellington Waterfront Ltd



Left: Self Portrait 6-2-11
by John Badcock

Right: Judy Williams by Juliet
Kac





Patricia St John, oil on plywood c. 1963 by Alan Pearson.
Donated by the artist 2012