



## **ANNUAL REPORT 2015**

# INTRODUCTION

---

## **The New Zealand Portrait Gallery made further significant progress in 2015. Our core preoccupations are, of course, exhibitions, associated activities and events, and the growth, curating and management of our permanent collection.**

This Annual Report provides telling detail about the progress that we have made with these matters, along with some indication of how we expect them to develop in the future. But these, and all of the things that make them possible – our handsome heritage building on the Wellington waterfront, Shed 11, the committed staff, the enthusiastic helpers and interns, and all the work behind the scenes – none of this would be possible without the financial generosity of our donors, large and small.

So I am particularly pleased to report that in 2015 the Freemasons Foundation joined our Cornerstone supporters group with a most generous commitment of \$25,000 for each of three years. To this must be added a munificent contribution from Guild Holdings Ltd., which is giving us \$20,000 for each of five years. These most welcome new Cornerstone friends of the Gallery join the Deane Endowment Trust, whose generous support, which started in 2014, enables us to maintain exhibition space for works from our permanent collection. As a Charitable Trust that receives no fundraising from either central or local government for our recurrent expenses, we could not possibly maintain or continue to improve the work that we do without this support.

As in the past we have benefited from a wide range of institutional support for our exhibitions and other activities, including from our long standing supporter, the Adam Foundation. These are specified elsewhere in

this report. But I would like to make special mention of the Infinity Foundation, which generously funded the expensive upgrading of our security system, so vital to our operations.

In the light of all this progress it once again gives me particular pleasure to emphasise here, on behalf of everyone at the Gallery, the depth of our appreciation of all our donors, institutional and personal. Such gifts included the very generous donation of nine Self-portraits by Melvin Day for our Permanent Collection. At the same time, I want once again to thank Suzanne Blumhardt and her small Development Committee for the focus and immensely hard work that they bring to their fundraising endeavours.

The results have been pleasing. Our audited accounts for the calendar year, published here, show that we finished in a reasonably strong position. As in the past the sum indicating Trust Equity at almost \$1.5 million includes – for accounting reasons – more than \$1.13 million in pre-paid rent for Shed 11, and not money that is available to us. Cash in hand at approximately \$230 thousand gives a truer indication of our real financial position. In this context, five years of the twenty-five years of our lease on Shed 11 having already passed, the Trustees have seen fit to set aside a considerable sum for lease renewal purposes. It is part of the prudent, forward-looking approach of the Trustees that we should always retain a clear view of the long-term future of the Gallery. In this way we face the challenge of the future financing of our steadily increasing activities with confidence and renewed determination.

The year saw one very significant change in personnel. After some twenty years of involvement with the Gallery Sir Michael Hardie Boys, who had served as our Chairman from 2006 to 2012, retired from his Trusteeship on 13 December. We were most fortunate to have had the benefit of his expertise and counsel over all the years of his involvement with us. His account of some parts of the early history of the Gallery, which he gave to us at our Founders Day celebration in December, enthralled the many of us fortunate to be present.

At the meeting of Trustees in December it was agreed to increase our number from nine to ten. We expect to make announcements about new Trustees during the course of 2016.

---

Meanwhile, we were delighted to welcome Anita Robertson, our Registrar and Administrator, back from parental leave, and to have been able to appoint Ms Ruby Eade to part-time work with the Gallery. She is making a significant difference to our presence on social media, and in all things digital. We have recruited some new dedicated volunteers to assist with Gallery supervision, and started an internship programme for young people hoping to make a career in curatorial work and museum and gallery management. These changes have improved our outreach and contributed to an improvement in the daily operations of the Gallery space.

These details aside, the Management Board has been focusing on the strategic direction of the Gallery through the

development of a new Strategic Plan. We are trying to look up to ten years ahead, envisaging what we would want the Gallery to be like, and how we would expect to bring it about. There are no simple answers. We are succeeding in channeling the rapid growth and development that we have experienced in the past ten years, and are using that experience to help us to see how to maintain and direct it into the future. Our starting point, as in all the recent years, is a clear focus on securing a sustainable future, and in doing so through a steady commitment to sound management and prudent financial control allied to a strong element of imaginative creativity.

**Dr. Keith Ovenden, Chairman.**



Rt Hon Sir Michael Hardie Boys, GNZM, GCMG, QSO.

# EXHIBITIONS HELD DURING 2015

---

The following exhibitions attracted 29,518 visitors to the Gallery which is a very good result. 1206 people visited in one single weekend for the Capital City 150 Years celebrations (July 24-25). This was certainly a record for the Gallery visitor numbers in one weekend.

## **13 November 2014 - 01 March 2015** **Who Am I?**

With the sponsorship of The Wellington Community Trust and Harry's, this exhibition, curated by The Dowse Art Museum was well patronised during the summer. Its interactive element ensured that there was something for everyone to engage with, and it was especially popular with young families and visitors to Wellington.



Gavin Hurley and Nigel Brown collages in the cabinet of *Tranquility Disturb'd*

## **12 March – 31 May 2015** ***Tranquility Disturb'd: A Contemporary look at historical New Zealand.***

Arts, Culture and Heritage Minister, Maggie Barry, officially opened this striking exhibition that featured new art work by Gavin Hurley, Lisa Reihana and Nigel Brown. All three well established New Zealand artists responded to the invitation by curator Richard Wolfe, offering their own interpretations of Captain Cook and European voyagers' (re) discovery of the Pacific in the late 18th century.

The exhibition demonstrated the diversity of contemporary portraiture and provided an alternative perspective to accepted versions of history. The show provoked debate and discussion about the continuing power of portraiture, and its contribution to the relevance of artistic discourse in the 21st century.

## **11 June – 23 August 2015**

### ***Capital Characters: Wellington Portraits from Then to Now***

Our winter exhibition, curated by David Colquhoun, and officially opened by Mayor Celia Wade Brown, was a cross section of famous, infamous and little known people who have all left their mark on Wellington over the 150 years since it became the capital on July 26 1865.

We presented several curator's talks about the more than 60 portraits of politicians and prostitutes, scholars and artists, radicals and conservatives, business leaders, public servants, criminals, philanthropists and performers, which were loaned by Te Papa, the Alexander Turnbull Library, the Wellington City Council, Archives New Zealand and private collections.

Visitors to the Gallery enjoyed connecting with the many different characters on display, and sharing their personal memories of Wellington.

The New Zealand Portrait Gallery was able to develop, promote and mount this well received exhibition with the kind support of both The Lion Foundation and Pub Charity Ltd.



Visitors at Capital Characters during the *Capital 150, Open House Weekend*





Two visitors contemplate *Huia Couple, Linda and Leo* (1978 – 79), during *A Life Lived Intensely: Alan Pearson Portraiture*

**25 November 2015 - 08 February 2016**  
***A Life Lived Intensely: Alan Pearson Portraiture.***

Exploring the relationship between Expressionist painter, Alan Pearson, his subjects and the individual experiences that lie behind each sitting, 40 drawings and 25 painted portraits borrowed from private and public collections throughout the country were brought together for this show. From his early years as an art student in Canterbury, to the many self-portraits completed while living in Australia, Alan has constantly pushed portraiture as a way to question and reveal the complexities of the human condition.

In 2013, Alan donated to the New Zealand Portrait Gallery 96 drawn portraits covering the past seven decades of his artistic career. This donation is one of the Gallery's most significant gifts to date, and became the catalyst for the successful exhibition developed and curated by New Zealand Portrait Gallery staff. A University of Victoria of Wellington student from the Museum and Heritage Studies programme researched and catalogued the drawn portraits. Alan Pearson and his wife and biographer, Alison, were in attendance at the opening of the show, as was former senior curator of the Christchurch City Art Gallery and Robert MacDougall Gallery, Neil Roberts, who gave an insightful and passionate speech to the audience about Alan's portraiture.

**ADAM PORTRAITURE AWARD 2014 TOUR**

31 January – 22 March 2015  
 Millennium Gallery, Blenheim

10 April – 22 June 2015  
 Hastings City Art Gallery, Hastings

**DEANE GALLERY PROGRAMME featuring works from the New Zealand Portrait Gallery Collection**

5 January – 29 May 2015  
*Commanding Faces and Faces in Command*

8 June – 30 August 2015  
*Favourite Faces*

28 September - 15 November 2015  
*National and Adam Portraiture Award: Top Portraits 2000 – 2014*

16 November 2015 – 11 February 2016  
*Voice and Verse: Poets and Musicians*



Director Gaelen Macdonald and Alan Pearson at the opening of *A Life Lived Intensely: Alan Pearson Portraiture*, photo by Barbora Michálková

# PUBLIC PROGRAMME

---

## **1 – 31 May: Who's Missing?**

We asked New Zealanders "Who's Missing?" from the walls of the New Zealand Portrait Gallery and from the hundreds of nominations received, social justice campaigner Celia Lashlie was a clear winner. After our first ever crowd funding campaign through Boosted, and with support from Celia Lashlie Projects, we were able to commission a portrait of Lashlie by Heather Main, and the work was unveiled in December.

## **26 June: Sasha Huber - Shooting Stars**

Swiss-Haitian artist and the Te Whare Hēra Wellington International Artist in Residence 2015, Sasha Huber, gave a lecture about her contemporary portraiture, and the projects she is working on.

**29 June: A Luncheon and Private Viewing** of Capital Characters with a Curator's floor talk, was held for Key Donors.

**24 July: Alexander Turnbull Library staff breakfast tour** of Capital Characters.

**6 – 17 July: School Holidays Programme** with exhibition tours and activities.

## **25 – 26 July: Capital 150 Open Weekend**

2015 marked Wellington's 150th year as the capital. During the birthday weekend the New Zealand Portrait Gallery hosted several events to link with the city-wide Open House programme. Portrait Artists Unite and The Portrait Artist at Work brought together artists and the public to capture the likeness of two 'Capital Characters', Councillor Paul Eagle and 2010 Wellingtonian of the Year, Ruth Gotlieb.

## **22 August: Capital Characters Closing Weekend**

was celebrated with a final curator's tour of the exhibition and former Mayor and Wellington Regional Council Chair, Fran Wilde, sitting for our group of portrait artists.

## **Last Saturday of every month: Saturday Sittings**

New Zealand Portrait Gallery hosts an afternoon of portraiture on the last Saturday of every month. With a different, interesting sitter each month, these free portraiture sessions are for everyone - from the complete beginner to accomplished artist, and are relaxed, informal and fun. Coffee is generously provided by Mojo.

## **26 November: Alan Pearson Floor Talk**

Artist Alan Pearson spoke about his work, inspiration, and the people in his portraits to an engaged group during our lunchtime floor talk.

## **6 December: Celia Lashlie Unveiling**

The unveiling of the recently commissioned Celia Lashlie portrait for the New Zealand Portrait Gallery permanent collection was held in early December. Celia's daughter, Rebekah Henderson, officially unveiled the portrait to a crowd of 175. Some key people from Celia Lashlie's personal and professional life spoke briefly to give some context to the portrait.

## **9 December: Christmas at the Gallery with Supertonic**

Supertonic Choir (formerly the Wellington Young Professionals Choir) performed alongside the Tawa College Choir, 'Christmas at the Gallery concert'.

## **13 December: Founders Day**

We celebrated Sir Michael Hardie Boys' very generous and admirable contribution to the Gallery through his governance roles both as Chairman of the Board and Trustee. Dr Conal McCarthy, Programme Director, School of Art History, Classics and Religious Studies at Victoria University of Wellington spoke about the value of the recent partnership between the Gallery and his Department's student professional development programme.



A painting of Fergus Collinson by Jake Fairweather at one of our *Saturday Sittings* events.



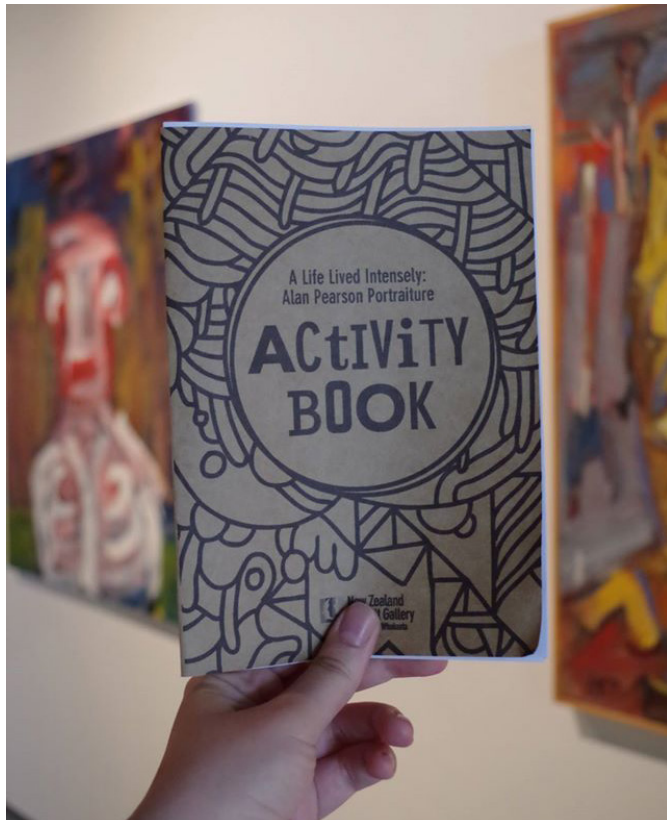
---

## SCHOOL VISITS

From the Real Teal Challenge of Wellington Girls' College's Real Teal Challenge to Kapiti Primary School we have had a range of different school groups coming in to explore the Portrait Gallery. A school favourite was Capital Characters – a chance to learn about the people who made Wellington.

## CHILDREN'S ACTIVITIES

We have had a range of exhibition specific activities for children and families, including an activity guide for *A Life Lived Intensely: Alan Pearson Portraiture*, and three artist guides for *Tranquility Disturb'd*. During *Capital Characters* we partnered with Wellington Museum to provide a scavenger hunt through our two institutions.



Children's Activity Book for *A Life Lived Intensely: Alan Pearson Portraiture*, designed by Mary Becker and written by Ruby Eade.

## DRAWING TABLE

This year we introduced a permanent drawing table with materials and drawing boards for visitors to take a break and have a sketch. It is very popular and often filled with friends and families drawing themselves or each other.

**Gaelen Macdonald, Director**



Public programmes co-ordinator Ruby Eade with students from Kapiti Primary School who visited thanks to the 150 Buses project. Photo by Neil Mackenzie.



Students from Kapiti Primary School connect with portrait of Kapiti based writer and poet Patricia Grace by Glenda Randerson. Photo by Neil Mackenzie.

# ADMINISTRATIVE MATTERS

---

The staff of the Gallery are knowledgeable, dedicated, enthusiastic, imaginative and resourceful. Gaelen Macdonald, the Director, completed her first year in the role in December 2015; we welcomed back Anita Robertson, Gallery Administrator, from parental leave in March 2015. The position of Gallery Administrator/ Outreach Officer, created on a temporary basis in early 2015, is to become a one year contract position in early 2016. This reflects the Gallery's growing educational and outreach work. Ruby Eade, who held the temporary position, will take on the contract role. The work of Gaelen, Anita, Ruby and the team of Gallery supervisors and volunteers who manage the day to day work of the Gallery is greatly appreciated by the Trustees.

Gaelen Macdonald will take a period of parental leave during 2016. The Trustees are delighted that Helen Kedgley, until recently the Director of PATAKA Art + Museum, has agreed to fill the role of Director on a temporary basis.

The Administration Committee has supported the Director and staff throughout the year on a range of organisational matters, including the selection of an updated security system and some new office equipment; erection of a

donors' board in the entrance to Shed 11; modifications to the Gallery's database, and the very successful promotion of Shed 11 as a venue for exhibitions and functions.

We had discussions with City Shaper at the end of 2015 about the fact that Shed 11 now looks a little shabby alongside recently refurbished neighbouring arts institutions, and our concerns that City Shaper's new signage guidelines have severely limited our ability to advertise both the Gallery and our exhibitions. City Shaper was quick to recognise the importance of these matters to the Gallery's success in attracting visitors and has undertaken to repaint in early 2016. We are hopeful that satisfactory arrangements will be made shortly on signage.

The Trustees agreed in December 2015 that preliminary work be undertaken on a proposal to reconfigure the interior of Shed 11 in order to provide more office accommodation and work space. Architects CCM, who did the work on the 2012 refurbishment, have been contracted to draw up plans. If, as we hope, the reconfiguration proves feasible, a major fundraising effort will be required.

**Diane Morcom**  
Chair, Administration Committee



The New Zealand Portrait Gallery, Shed 11, Photo by CCM Architects



# FUNDRAISING

---

The Gallery continues to rely on donations to meet its running cost and to mount exhibitions.

Contributions from private individuals are critical to the Gallery's ongoing success. We are grateful to all who contributed as Masters, Artists and Canvas supporters, and we especially appreciate the Five for Five contributions made by those who have committed to give \$5,000 a year for five years. These ongoing pledges provide very welcome security and help with forward planning.

In 2015 we were pleased to add a new donor, Guild Holdings, which has pledged contributions of \$20,000 a year for five years. Guild joins the Freemasons Foundation as one of our cornerstone donors.



Promotional Image for *Who's Missing?*

We are very grateful to the ongoing support of our corporate donors, and the trusts and foundations which have helped us during the year enabling the Gallery to extend its activities. All donors are listed on page 14. The Adam Foundation generously again funded the flagship Adam Portraiture Award for 2016, and contributions from the Lion Foundation, Pub Charity, Harry's, and the Wellington City Council Arts and Culture Fund helped fund the major exhibitions of 2015. A welcome contribution from New Zealand Community Trust assisted with the Director's salary. New supporters added in 2015 included the Stout Trust, the Infinity Foundation and Resene Paints.

A very successful trip to the Gibbs Farm sculpture park and the Pah Homestead in Auckland organised with the Gallery by the Decorative and Fine Arts Association of Wellington (WeDFAS) provided a popular activity for supporters of the Gallery and proved a successful fundraiser.

In a new departure in 2015 the Arts Foundation Boosted website was used very successfully to raise funds to acquire a portrait of Celia Lashlie, chosen in our *Who's Missing?* campaign for inclusion in the permanent collection.

2015 also saw the delivery of new chairs for the Gallery, all funded through a special appeal to our private supporters.

The New Zealand Portrait Gallery Trust is a registered charity that welcomes financial support from the public by way of donations. There are three tiers of benefactors of the Gallery: the Masters Circle for an annual donation of \$5,000 or more; the Artists Circle for annual donations from \$2,000 to \$4,999; and the Canvas Circle for annual donations from \$250 to \$1,999. All donations attract a one third tax credit. For further information please see the donation form included with this report.

**Suzanne Blumhardt**  
**Chair, Development Committee**

# ASSOCIATION OF FRIENDS OF THE NEW ZEALAND PORTRAIT GALLERY

---

The strength and vitality of the Friends' network is confirmed by an impressive number of activities which have raised public awareness about the New Zealand Portrait Gallery throughout New Zealand and abroad. This report gives an overview of the progress and potential of the Friends' Association. As I write I am reminded of Bill Brandt's aim, "a good portrait ought to tell something of the subject's past and suggest something of his future".

Over several years the Friends have sponsored the acquisition of works for the Gallery. To continue these important purchases we established the Friends' Acquisition Fund with the aim of donating at least one portrait per year. Although not in a financial position to donate a portrait in 2015, we did give \$10,000 to the Gallery from money raised. Our aim remains to donate at least one portrait in 2016 and thereafter. Many Friends individually contributed to the funding of the Celia Lashlie portrait which was commissioned by the Gallery.

Various tours have proved to be highly successful in promoting portraiture and our Gallery. A highlight has been an interesting new programme of Portrait Artists' Studio Tours, begun in 2014. Money raised from the tours has supported our Friends' Acquisition Fund. In 2015 three studios were visited with attendees entertained and informed about portraiture by Piera McArthur, Max Gaudie, former defence force artist, and Sally Edmonds who has been painting portraits of members of the NZSO. We thank our hosts for their generous hospitality and stimulating talks about their creative lives and works. Face to Face, written by Committee member, Sue Upton, and published in the November issue of Capital Magazine highlights the 2015 NZPG European Tour to Denmark, Sweden, Scotland and England. This article provided an insight into aspects of the tour and highlighted our Portrait Gallery along with the Adam Portraiture Awards. Sue wrote, "It was interesting to compare the European portrait galleries with our own and to meet the extraordinary welcoming people connected with them". The tour ended with the BP Portrait Award 2015 at the National Portrait Gallery in London. We expect once again shortly to meet Mette Skougaard, Director of The Museum of National History at Frederiksborg Castle, Denmark, who will be judging the forthcoming 2016 Adam Portraiture Award.

It has been our pleasure working together with WeDFAS on an Auckland Tour to Gibbs Farm and the Pah and we are delighted with the success of this.

A miscellany of other activities have been undertaken including: supporting a visit by artist Susan Wilson who spoke at the Gallery and donated a portrait; our new Friends' membership form which has been favourably received; keeping our news updated in the Gallery Newsletter; and on-going assistance with exhibition openings and other functions.

We thank those Friends who have volunteered to be on three hour shifts in the Gallery's reception area during public opening hours. We have planned the ever-popular senior, long-term members' luncheon to be held during the Adam Portraiture Award exhibition. We welcomed visiting Christchurch Art Gallery Friends in May. Our Schools visits initiative has been successful. In 2015 it was handed to the Director and Gallery staff to be continued. Friends will continue to sponsor visits by decile 1 and 2 schools.

The Friends thank our Director, Gaelen Macdonald, and her staff for their commitment to the Gallery. As I write this report, Gaelen is soon to take maternity leave and we send her our good wishes as she approaches this exciting stage in her life.

I take this opportunity to express my sincere thanks to the members of the Friends' Committee for their helpful contributions in their various roles and for their support and continuing dedicated work. We congratulated Natalie Smith, Past President of the Friends, on her 100th birthday. Also we congratulated long-time Gallery supporter and Committee Member, Jane Aim, on her award of a QSM. To all our members, thank you for renewing your membership in 2015 and for your support of the Gallery through our Friends' Acquisition Fund. I salute the Committee and our members for their unflinching enthusiasm.

I will continue to work with you to achieve the aims of the Gallery as a vital national arts institution.

**Joy Dunsheath President  
February 2016**

# THE GALLERY'S FINANCES

A summary of the financial statements is set out below. The full audited financial statements are available from the New Zealand Portrait Gallery's website and the Charities Services website.

## THE NEW ZEALAND PORTRAIT GALLERY TRUST STATEMENT OF FINANCIAL PERFORMANCE

For the year ended 31 December		2015	2014
	Notes	\$	\$
<b>Income</b>			
Donations from individuals	1	120,883	141,816
Friends of the Gallery		10,000	9,000
Grants: Trusts, Foundations, Corporates		92,330	50,000
Interest & Gallery rental		45,460	41,143
Exhibition grants		28,740	77,000
Shop sales, touring fees & commission		19,719	23,602
<b>Total Income</b>		<b>317,132</b>	<b>342,561</b>
<b>Expenses</b>			
Salaries & Wages		129,893	110,126
Gallery operation		62,092	46,068
Lease annual cost	2	58,000	58,000
Office		14,617	11,631
Publicity		5,415	7,433
Professional		5,774	3,873
Exhibition Costs		59,595	83,628
<b>Total Expenditure</b>		<b>335,386</b>	<b>320,759</b>
<b>Surplus (-Deficit)</b>		<b>-18,254</b>	<b>21,802</b>

## STATEMENT IN MOVEMENTS IN EQUITY

For the year ended 31 December		2015	2014
<b>Accumulated Funds</b>			
Balance 1 January		1,492,709	1,470,907
Add: Surplus (-Deficit)		-18,254	21,802
Transfer to Lease Renewal Reserve		-100,000	-
<b>Balance 31 December 2015</b>		<b>1,374,455</b>	<b>1,492,709</b>
<b>Reserves</b>			
Lease Renewal Reserve	2	100,000	-
Art Collection Revaluation		23,387	23,387
		123,387	23,387
<b>Surplus (-Deficit)</b>	2	<b>1,497,842</b>	<b>1,516,096</b>



## THE NEW ZEALAND PORTRAIT GALLERY TRUST

### STATEMENT OF FINANCIAL POSITION

As at 31 December	2015	2014
	\$	\$
<b>Trust Equity</b>	<b><u>1,497,842</u></b>	<b><u>1,516,096</u></b>
Represented by:		
<b>Current Assets</b>		
Cash at Bank	3      230,754	181,478
Accounts Receivable	8,177	16,890
GST	<u>505</u>	<u>1,799</u>
	239,436	200,167
<b>Non Current Assets</b>		
Prepaid Lease	2      1,131,000	1,189,000
Art Collection	4      116,281	107,781
Fixed Assets	<u>38,956</u>	<u>38,994</u>
	1,286,237	1,335,775
<b>Total Assets</b>	<b><u>1,525,673</u></b>	<b><u>1,535,942</u></b>
<b>Current Liabilities</b>		
Accrued Charges	685	500
Accounts Payable	1,992	5,161
Deferred Income	22,338	11,508
Payroll	2,696	2,083
Other balances	<u>120</u>	<u>-</u>
	27,831	19,252
<b>Net Assets</b>	<b><u>1,497,842</u></b>	<b><u>1,516,690</u></b>

**Notes:**

1. Donations received 2014 included \$33,000 for acquiring specific assets, of which \$27,000 was for portraits. Similarly, in 2015 \$9,200 was received and \$8,500 spent on a portrait.
2. The Trust Equity total of \$1,497,842 mostly consists of the prepaid gallery rental of \$1,131,000 which accounting rules require to be allocated over the period of the lease. The amount of \$58,000 shown in the Statement of Financial Performance is the amount of this annual allocation.
3. Includes \$100,000 allocated by the Trustees to a Leasehold Renewal Fund to provide for a new lease on the expiration of the current 25 year lease.
4. A current insurance valuation of the collection was made in December 2015 and 40% thereof was very close to the current book value. Therefore, no adjustment has been made.
5. The Trust is dependent on the voluntary services of many supporters of the Gallery the value of which is not recognised in the financial statements.
6. The Friends organisation comes under the NZ Portrait Gallery Trust's deed but operates autonomously from gallery activity. Separate financial statements covering the Friends' activities are sent annually to members.

# TRUSTEES & OFFICERS OF NEW ZEALAND PORTRAIT GALLERY 2015

---

<b>Patron</b>	The Governor-General of New Zealand, His Excellency Lt Gen the Rt. Hon Sir Jerry Mateparae, GNZM, QSO
<b>Trustee Emeritus</b>	Mr Denis Adam, CNZM
<b>Trustees</b>	Dr Keith Ovenden (Chairman) Mr Michael Curtis Mr Hugh Fletcher Rt Hon Sir Michael Hardie Boys, GNZM, GCMG, QSO (until December 2015) Ms Diane Morcom, CNZM, CVO Ms Donna Nicolof Mr David Shand Ms Elizabeth Stringer Ms Eve Wallace
<b>Treasurer</b>	Mr Richard Tuckey
<b>Management Board</b>	Ms Denise Alamo Ms Suzanne Blumhardt
<b>Director</b>	Ms Gaelen Macdonald MFA, University of Auckland; BVA, AUT; PGDipNFP Management, UNITEC
<b>Administrator &amp; Registrar</b>	Ms Julie Anne Young BA UCC; MA Cultural Heritage & Museum Studies, UU (until February) Ms Anita Robertson BA & PGDip Art Curatorship, Canterbury; PGDipMusStud, Massey (from March)
<b>Outreach Officer</b>	Ms Ruby Eade
<b>Gallery Designer</b>	Ms Mary Becker
<b>Gallery Supervisor</b>	Mr Mike Tiller
<b>Public Relations</b>	Mr David Barber

## **Programme Committee**

Ms Gaelen Macdonald (Chair)  
Ms Elizabeth Alley (until November)  
Mr David Barber  
Ms Suzanne Blumhardt  
Ms Jenny Button  
Dr Pamela Gerrish-Nunn  
Mr Christopher Johnstone  
Ms Joan McCracken (A.T.L.)  
Mr Gavin McLean (MCH)  
Dr Keith Ovenden

## **Finance & Planning Committee**

Mr David Shand (Chair)  
Ms Denise Alamo  
Ms Suzanne Blumhardt  
Mr Michael Curtis  
Ms Gaelen Macdonald  
Ms Diane Morcom  
Ms Donna Nicolof  
Dr Keith Ovenden  
Mr Richard Tuckey

## **Development Committee**

Ms Suzanne Blumhardt (Chair)  
Ms Denise Alamo  
Mr David Barber  
Ms Val Fergusson  
Ms Gaelen Macdonald  
Dr Keith Ovenden  
Ms Leonie Smiley

## **Gallery Volunteers**

Ruth Anthony  
Oona Bellam  
Karlós Bogoievski  
Frances Boughen  
Basil Brown  
Jenny Button  
Margaret Calder  
Gillian Clark-Kirkcaldie  
Sophie Crichton  
Patsy Fischer  
Creena Gibbons  
Carolyn Harrison  
Robert Laking  
Paul Lambert  
Barbora Micháľková  
Diana Morrison  
Anne Neal  
Chantel Rich  
Ikey Robertson  
Leonie Smiley  
Sue Upton  
Margaret Walls  
Jane Wright

## **Friends' Committee**

Ms Joy Dunsheath (President)  
Mrs Diana Morrison (Past President)  
Mr Richard Tuckey (Treasurer)  
Ms Jane Aim  
Ms Jenny Button  
Mr Bill Buxton  
Ms Jane Kirkcaldie  
Mrs Sue Upton

## **Administration Committee**

Ms Diane Morcom (Chair)  
Ms Denise Alamo  
Ms Suzanne Blumhardt  
Mr Niels Holm  
Mrs Jane Kirkcaldie  
Dr Keith Ovenden  
Ms Anita Robertson  
Ms Liz Stringer  
Mr Richard Tuckey

## **Student Placements**

Georgia Banks  
Sarah Hatton  
Talei Langley  
Harriet Ongley  
Phillipa Steel

# GALLERY BENEFACTORS

---

## Cornerstone Members

Deane Endowment Fund    Guild Holdings Ltd    Freemasons Foundation    Adam Foundation

## Masters

Denise Almao  
Alfred and Suzanne Des Tombe  
Hugh Fletcher and Dame Sian Eilas  
Graham and Kate Fortune

Peter and Annabel Graham  
Sir Michael and Lady Hardie Boys  
Mary Annette Hay  
JF McHardy

John and Avenal McKinnon  
Dr Keith Ovenden  
Collin Post and Brenda Young  
Elizabeth Stringer

## Artists

Suzanne Blumhardt  
Diana Morrison

Grant Partridge  
Sir John Todd

## Canvas

Sarah Acland  
Tony and Kristin Arthur  
Gael Black  
Mr and Mrs M Browne  
William Buxton  
Ms Diana Duff-Staniland  
Ms Val Fergusson  
Hon L. Greig  
Prof Les Holborow

Heather Hutton  
Jeremy Johnson  
Dennis and Jane Kirkcaldie  
Ann Mallinson  
Diane Morcom  
Jim Norris  
Merv Norrish  
Neil and Rachel Plimmer

Ailsa Salt  
John Sladden  
Alison Stokes  
Hilary Timms  
Edith Tripp  
Judith Trotter  
Glenda West  
Charlotte Williams

## Other

David Boag  
Rodney and Vivian Callender  
Mr R and Mrs L Christie  
Barbara Cribb  
John Davidson

Beverley Eriksen  
Judith Fyfe  
Alison Grant  
Vincent Gray  
Clemency Harding-Brow

Shirley Martin  
Lady Mowbray  
Susan Snively and Ian Fraser  
Ann Trotter  
E.C Watson

## Corporate Sponsors, Trusts and Foundations

Absolutely Positively  
Wellington City Council  
Me Heke Ki Pōneke

 THE LION  
FOUNDATION

Pub  
Charity 

NZCT  
NZ COMMUNITY TRUST

 stout trust

 bnz



CHAPMAN  
TRIPP 

Resene  
the paint the professionals use

Community Post 

Friends of the  
New Zealand  
Portrait Gallery

 Infinity  
Foundation Limited

 Celia Lashlie  
Projects

 WeDFAS



# PORTRAIT ACQUISITIONS

---

*Charles Westwood Earle, (no date)* by Peter McIntyre. Oil on canvas. Gift of Fairfax media.

*Self Portrait, 1945* by Melvin Day. Oil on canvas. Gift of Melvin and Oroya Day.

*Self Portrait, 1946* by Melvin Day. Oil on hessian. Gift of Melvin and Oroya Day.

*Self Portrait, c1947* by Melvin Day. Oil on canvas. Gift of Melvin and Oroya Day.

*Self Portrait, cubist c1947* by Melvin Day. Oil on board. Gift of Melvin and Oroya Day.

*Self Portrait (unfinished), c1948* by Melvin Day. Oil on board with notations in charcoal. Gift of Melvin and Oroya Day.

*Self Portrait with Bears & Pipe, c1949- 50* by Melvin Day. Oil on board. Gift of Melvin and Oroya Day.

*Self Portrait, 1950* by Melvin Day. Oil on canvas. Gift of Melvin and Oroya Day.

*Self Portrait, 1995* by Melvin Day. Oil on canvas. Gift of Melvin and Oroya Day.

*Self Portrait after stroke, c2009* by Melvin Day. Oil on canvas. Gift of Melvin and Oroya Day.

*Dame Gillian Whitehead at Dusky Sound, 2008* by Nigel Brown. Oil on canvas. Gift of the artist.

*Self Portrait with Hat, 2012* by Nigel Brown. Oil on canvas. Gift of the artist.

*James Verity Young, 1949* by Rudolf Gopas. Pastel on paper. Gift of David Carson-Parker and Jeremy Commons.

*Swainson's Father in law, (no date)* by Unknown. Oil on canvas. Gift of David Carson-Parker and Jeremy Commons.

*Sister Loyola Galvin, 2012* by Bev Short. Lambda print on archival paper. Purchased through funds gift of Soroptimist International Wellington.

*NZer Weather Forcaster for D-Day Landing, 2011* by Susan Wilson. Oil on canvas. Purchased with funds from Richard and Doreen Evans Charitable Trust, and the Laurie Bushell Endowment Fund through the Nikau Foundation.

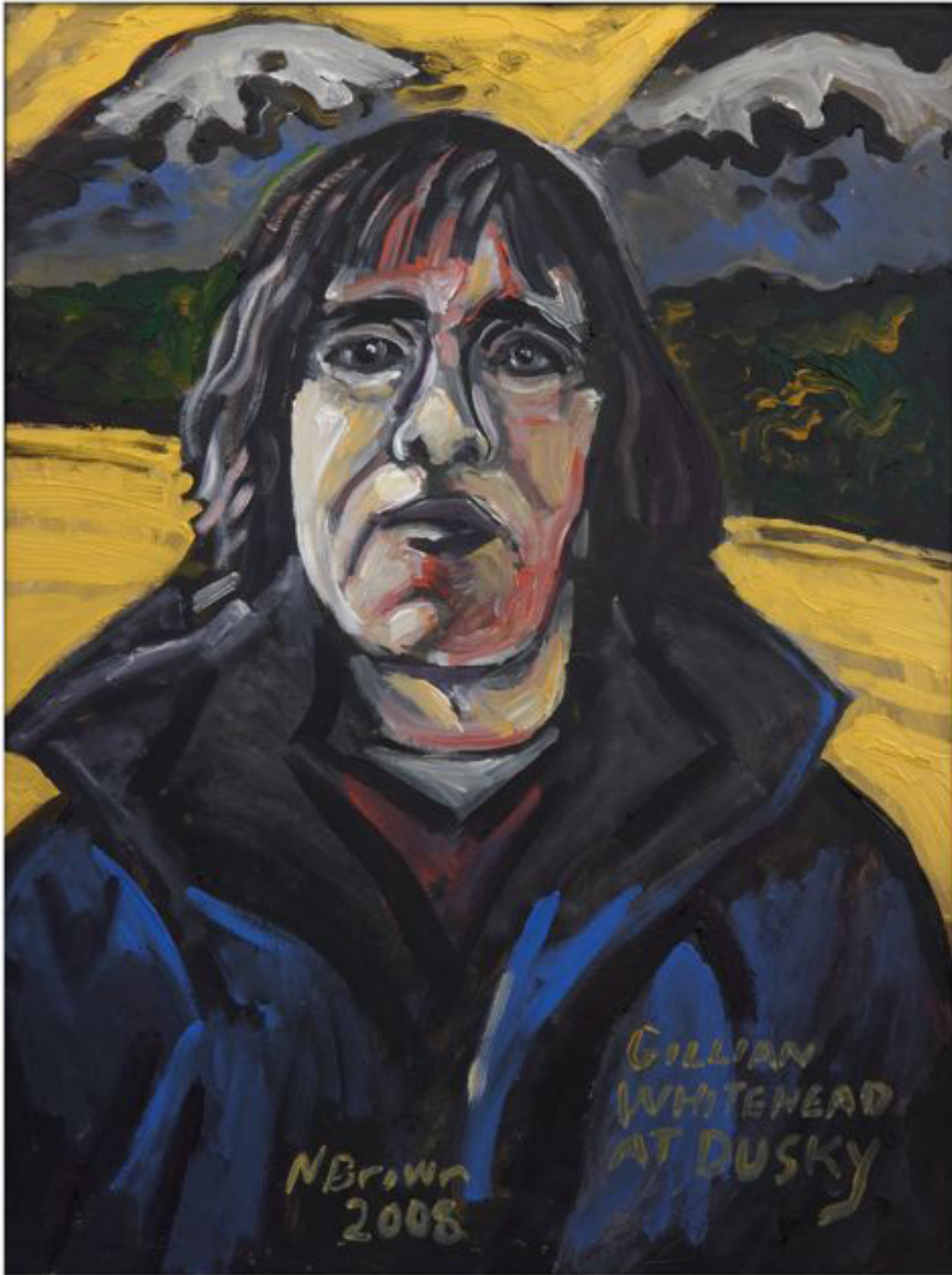
*Farewell Stelae II, 2014* by Susan Wilson. Oil on linen. Gift of the artist.

*Robin Duff Larger than Life, 2004 – 5* by Richard McWhannell. Oil on canvas. Gift of the estate of Robin Duff.

*Rita Angus, c1937* by Leo Bensemann. Oil on canvas. On long term loan from private collector.

*Gregory O'Brien and Jenny Bornholdt (after Robin Morrison), 2015* by Matt Grace. Ink jet print on archival paper. Purchased with funds from private donations.

*Celia Lashie, 2015* by Heather Main. Oil on canvas. Commissioned with funds from the Celia Lashlie projects and Boosted fundraising campaign.



*Dame Gillian Whitehead at Dusky Sound, 2008, by Nigel Brown. Oil on canvas. Gift of the artist.*